

Digging For Treasure!



Creating a Treasure Hunt Using Netscape Composer

*Elizabeth Langer, Coordinator/Specialist
Technology Services Division
Northside ISD*

Digging for Treasure!

Table of Contents

Introduction	2
The Basic Steps for Creating Any Webpage	3
Opening Composer	4
Creating a Treasure Hunt Webpage using a Template	4
Saving Your Work	5
Giving Your Page a Title.....	6
Entering Text.....	6
Formatting Text	7
Spell Checking.....	7
Previewing in the Browser	7
Changing the Page Background Color	8
Opening an Existing Page	8
Inserting a Link to another Website	9
Inserting a Graphic.....	9
Saving an Image from the Internet	9
Citing Your Source	10
Using an Image as a Background	11
Inserting Clipart.....	11

Digging for Treasure!

Introduction

In this class you will learn how to create a Treasure Hunt webpage with Netscape Composer. Composer is the powerful Web authoring editor that is a component of Netscape Communicator. Composer's intuitive interface automates many of the time-consuming tasks involved in building Web pages.

HyperText Markup Language, or HTML, is the language used to create Web pages. HTML is very much like a programming language and used to be the *only* way to create Web pages. These days, a person does not need to learn HTML because of Web authoring tools such as Composer. From the user's point of view, Composer is similar to word processing and desktop publishing. However, as the user types text and selects items from the menu bar and toolbars, Composer automatically generates HTML codes "behind the scenes" so that the Web pages may be successfully viewed on the World Wide Web.

This class assumes that you have no experience creating Web pages, but that you have had some experience browsing the Web and with word processing.

Digging for Treasure!

The Basic Steps for Creating Any Web Page

1. Create a folder where you will store all items used in the creation of your Web pages (i.e.: text, graphics and sounds). As your Treasure Hunt webpage grows, you'll need a central location to store all of your files.
2. Create the Treasure Hunt with a WYSIWYG Web page editor (i.e. Netscape Composer, Dreamweaver, Microsoft FrontPage)
3. Add the page elements (text, graphics, tables, sounds, etc.)
4. Save the page into the folder. (Again, this folder should contain all document files, image files, sound files, etc. that you utilize in creating your Web Pages.)
5. Publish the Treasure Hunt by giving your Treasure Hunt folder to the campus webmaster.

You will gain experience with items 1 through 4 in this class. Item 5, publishing the pages, will require you to contact your campus webmaster (probably the CIT). Do this when your Treasure Hunt is completely finished and ready to be uploaded to the web server.

Digging for Treasure!

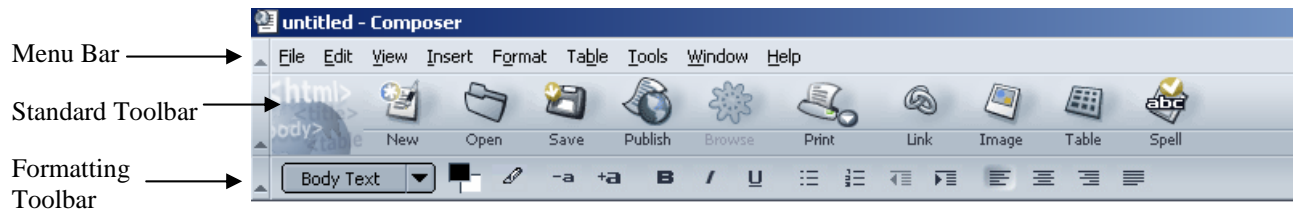
It is essential that all the documents related to your webpage are located in one folder. We will save everything we create today in a folder on the floppy disk.

- Insert the floppy disk
- Open the floppy drive
- Create a new folder and name it “*treasure hunt*”

Opening Composer

- Launch Netscape Composer.
- Click Create a Profile.
- Click Next.
- Type your name and click Finish.
- Under Available Profiles click your name.
- Click Start Netscape 7.1.

Take a moment to familiarize yourself with the buttons on the two Composer toolbars.



Guided Practice: Creating a “Treasure Hunt Web Page” using a template

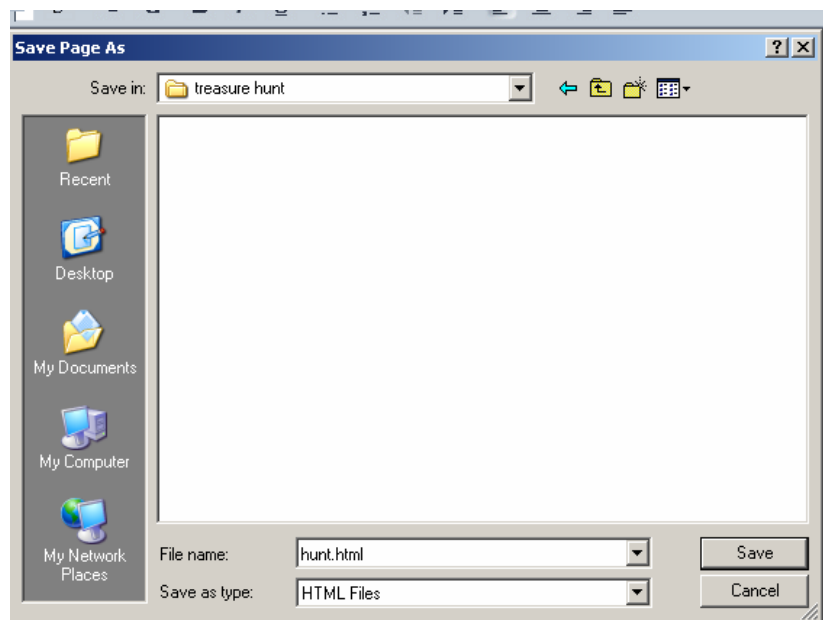
- From the File Menu click Open File.
- Navigate to the floppy drive
- Open the Treasure Hunt template file

Digging for Treasure!

Saving Your Work

Save your Web page in your **TREASURE HUNT** folder.

- Click the File menu
- Click the **Save AS** command
- Navigate to the floppy drive
- Open the folder
- Name your Treasure Hunt “hunt.html” - all one word no spaces or punctuation. Use lowercase letters.

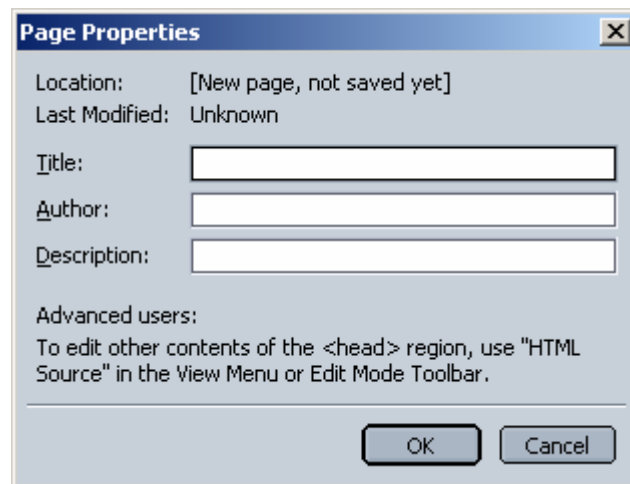


Digging for Treasure!

Giving Your Page a Title

You will also need to give your page a title when you save the page for the first time. The Page Title should be descriptive because it will appear in the title bar of your visitor's browser. We are renaming the template.html file.

- From the Format menu, select Page Title and Properties
- In the Title field, type the name for this page (i.e.: Texas Treasure Hunt).
- Click OK.



Entering Text

Entering text in Composer is exactly the same as entering text in any word processing program. Words will wrap automatically, so there is no need to press the carriage return key <ENTER> until it is time to end the paragraph.

Try it! Highlight the existing text in the introduction cell. Replace it with an introduction for your Treasure Hunt.

Reminder: Once you have made changes to your page, click the Save button on the toolbar.

Digging for Treasure!

Formatting Text

Almost all formatting (font size and face, alignment, bullets, bold, italics, etc.) can be accomplished by using the buttons on the Standard and Formatting Toolbars.

Try it!

- Highlight the existing text in the Title and replace it with the title of your Treasure Hunt. Try formatting this text in a variety of ways (size, color, and font).

Spell Checking

Misspellings attract the wrong kind of attention on a Web page! Run the spell checker frequently. It works very much like the spell check tools in popular word processing applications.

Try it!

- Click the Spell button on the Standard Toolbar
- When you are finished, click Close
- Click the Save button.



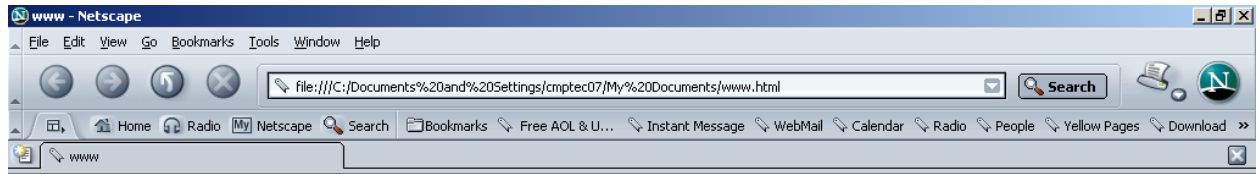
Previewing in the Browser

For the most part, Composer is a WYSIWYG editor. Text wrapping (around an image) is an example of a feature in Composer that is not WYSIWYG. So, to really see what your page will look like on the WWW, you must look at it in the Navigator browser. Here's how:

- Click the Browse button on the Standard Toolbar.
- Notice how the toolbar looks different when you are in the browser. Also notice the blue Title Bar that says "Netscape"



Digging for Treasure!



To return to Composer, click the Close Box in the top right corner.

Please note that you cannot make changes to your web page when you are previewing it in the browser. Changes can only be made in Composer.

Changing the Page Background Color

- From the Format menu, click the Page Colors and Background command.
- Click the color swatch next to Background and then click to select a particular color.
- Click OK. You will see a small preview window.
- Click OK.

Try it!

- Change the background color of your page to a color you like.
- Re-save your Treasure Hunt.
- Preview in the browser
- Exit Composer completely and return to the desktop.

Opening an Existing Page

- Launch Netscape Composer.
- From the File menu, click the Open File command.
- Navigate to your webpage folder (it's on your floppy disk).
- Double-click to open your webpage.

Digging for Treasure!

Inserting a Link to another Website

Now it's time to link to the web pages you want your students to use to answer questions. You will be "togglng" between Netscape Composer and the Internet as you search for websites to use in your Treasure Hunt.

Try it!

On the Internet

- Find a website you want to link to.
- Highlight the URL.
- Copy the URL (Edit-Copy)

In Composer

- Write the name of the website in the Research section.
- Highlight the name of the website
- Click the Link button on the Standard Toolbar.
- Paste the URL in the link box
- Click **OK**.
- Re-save this page.
- Preview your page in the browser and test your link.

Inserting a Graphic

Small graphics (icons) should be used on a Web page to visually break up the text and to create white space. The Internet is a wonderful source for obtaining free icons. Also, images acquired with a digital camera or scanner will really personalize a page and add significantly to its content. It is important that you save these image files in your Web site folder **BEFORE** you actually use them in your pages.

Saving an Image from the Internet

To save a piece of clipart:

- Right-click the image
- Select "**Save Image As**"
- Give the clipart a name and save it in your **website folder**. The image must be a gif or jpg format for use on the web.

Digging for Treasure!

To save a background:

- Right-click the background and select View Background Image.
- Right-click the image and select **“Save Image As”**
- Give the background a name and save it in your **website folder**.

Citing Your Source

All images and backgrounds you use must be cited. It is best to fill out the Credits part of your Treasure Hunt as you are creating the webpage because you will be viewing a lot of websites and you may not be able to remember where you got the images or background you used for your webpage.

Graphics

Here is an easy way to cite an image. You must cite each image separately.

Name of graphic [Online Image]. Available: [http:](http://)put the URL for the website here,
Date of download: June 28, 2002

Example:



countryfamilyteddiex.gif [Online Image].

Available:<http://www.countryclipart.com/> Date of download, June 28, 2002

More information on citing sources can be found at

<http://www.nisd.net/howww/howww/Library/research/citations.htm>

Digging for Treasure!

Using an Image as a Background

Again, the Internet is a wonderful source of images that may be used as a background for your page.

Try it!

- From the Format menu, click Page Colors and Background.
- Click the Choose File button.
- Double-click the “__.GIF” file. This is your background.
- Click OK.
- Now, preview your page in the Navigator browser.

Inserting Clipart

- From the Insert menu, click Image.
- Click the Choose File button.
- Select your file from your website folder.
- In the Alternate text field: type a description of the image.
- Click OK.