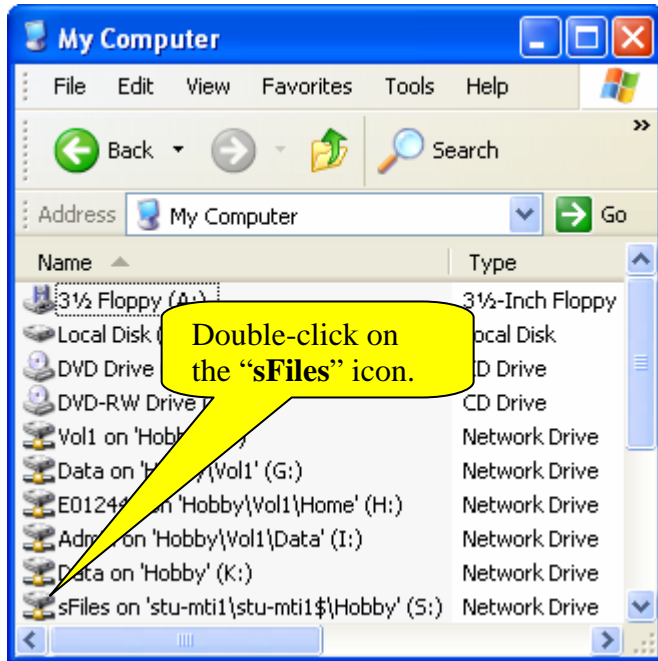
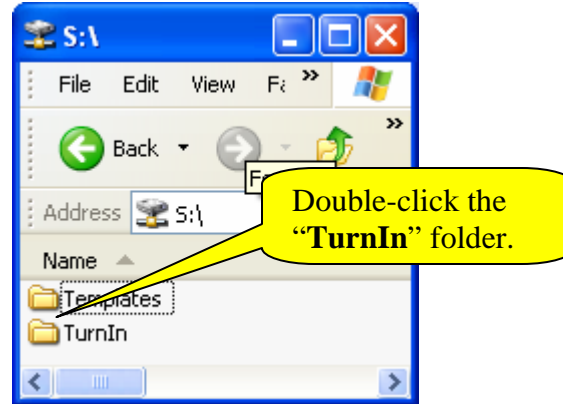


ACCESSING STUDENT WORK FROM sFiles

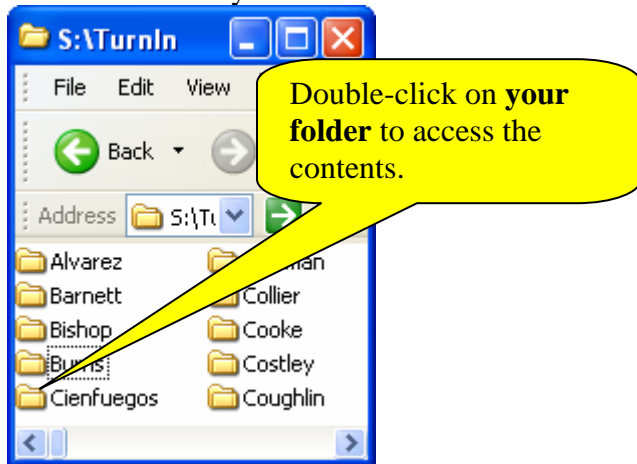
1. Open “My Computer” from your desktop and double-click on the “sFiles” icon.



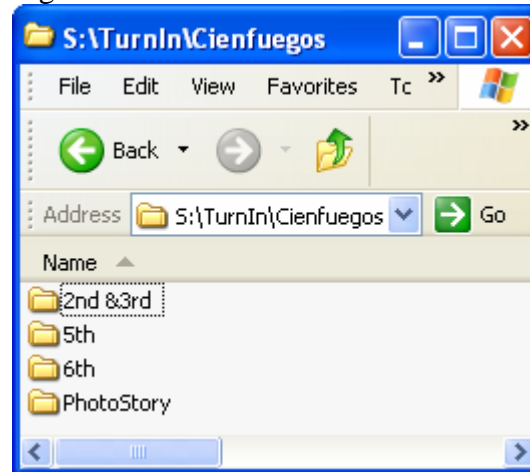
2. Double-click the “TurnIn” folder.



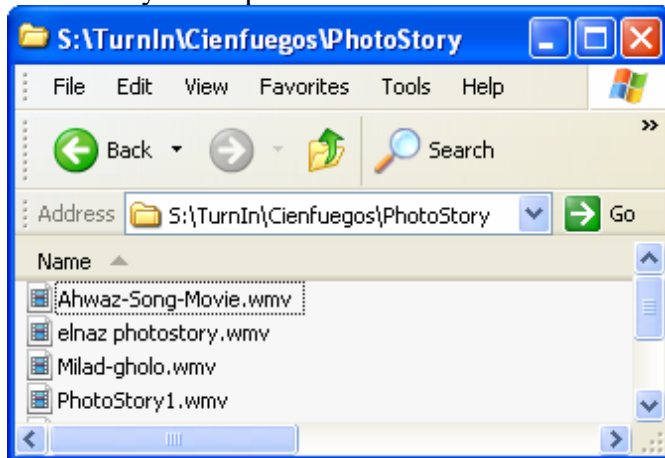
3. Double-click on **your** folder to see what has been turned in to you.



4. You may want to create additional folders (File>New>Folder) within your main folder. This helps to organize student work.



5. You may then open and access student work.



NOTE: A video explaining how students can use sFiles is located below and can also be found on the main Hobby web page.

<http://www.pavenet.org/sFilesProject/sFilesProject.html>