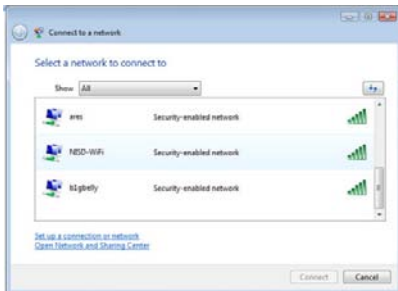


# Connecting Personally-owned Laptops to the NISD WiFi – Vista OS



**NOTE:** NISD WiFi is intended for use with *personally-owned laptop computers*. Instructions may vary depending on the wireless card and drivers on your laptop. *You will not have access to network drives and printers if you connect to the NISD WiFi on a District-owned laptop. Use of the NISD WiFi is filtered by NISD.*

1. From the pop-up window, select **CONNECT TO A NETWORK**.
2. From the list of wireless connections, select **NISD-WiFi** and click **CONNECT**.



3. Enter the word **northside** (all lower-case letters) for the Security Key and click **CONNECT**.
4. Once connected, select **SAVE THIS NETWORK** and **START THIS CONNECTION AUTOMATICALLY**.
5. Click **CLOSE**.



6. At the *Portal login screen*:



**NISD Employees:** enter your network login information for **USERNAME** and **PASSWORD**

**NISD Guest:** obtain the guest login information from the campus CIT, CAT, Librarian, or NISD host.

7. Click **Log In**.
8. You will be redirected to your homepage. You are now connected to the NISD WiFi.