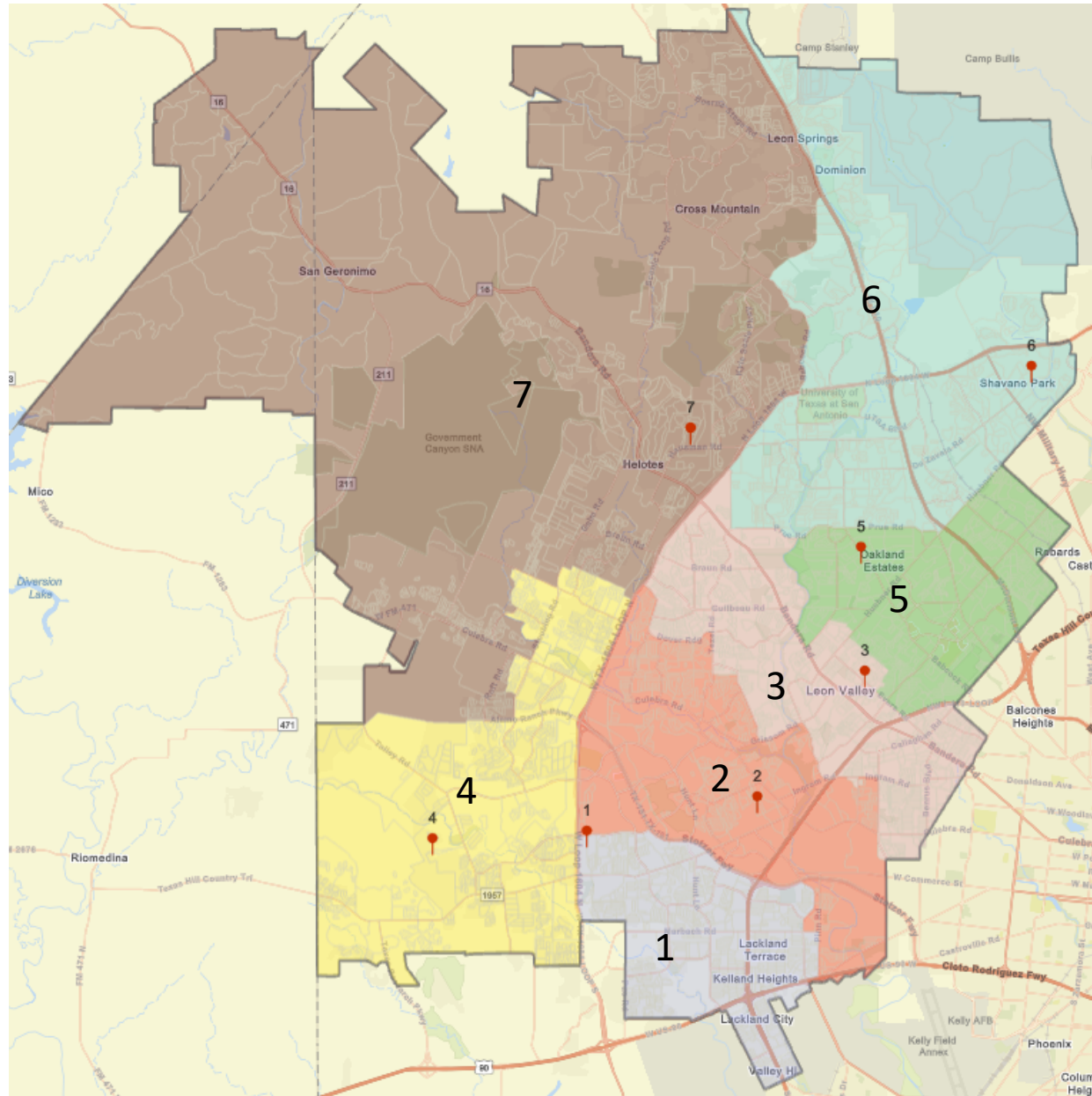


Northside ISD

Plan A



Trustee Address

Northside ISD

Plan A Analysis

NORTHSIDE INDEPENDENT SCHOOL DISTRICT

2020 CENSUS TOTALS - PLAN A

Trustee District	TOTAL POPULATION						TOTAL POPULATION PERCENTAGES					
	Anglo	Asian	Black	Hispanic	Other	Total	Anglo	Asian	Black	Hispanic	Other	Total
1	14,949	1,971	6,966	70,584	3,064	97,534	15.3%	2.0%	7.1%	72.4%	3.1%	100.0%
2	18,626	2,526	6,840	61,060	3,131	92,183	20.2%	2.7%	7.4%	66.2%	3.4%	100.0%
3	23,849	2,764	4,571	61,392	3,134	95,710	24.9%	2.9%	4.8%	64.1%	3.3%	100.0%
4	28,051	3,838	9,126	51,580	5,017	97,612	28.7%	3.9%	9.3%	52.8%	5.1%	100.0%
5	28,695	9,532	7,525	45,549	3,984	95,285	30.1%	10.0%	7.9%	47.8%	4.2%	100.0%
6	34,821	7,443	6,012	44,201	4,010	96,487	36.1%	7.7%	6.2%	45.8%	4.2%	100.0%
7	35,923	5,623	5,252	39,979	4,154	90,931	39.5%	6.2%	5.8%	44.0%	4.6%	100.0%
TOTALS	184,914	33,697	46,292	374,345	26,494	665,742	27.8%	5.1%	7.0%	56.2%	4.0%	100.0%
		7 DIST AVG		95,106	7.3% Percent Differential *							

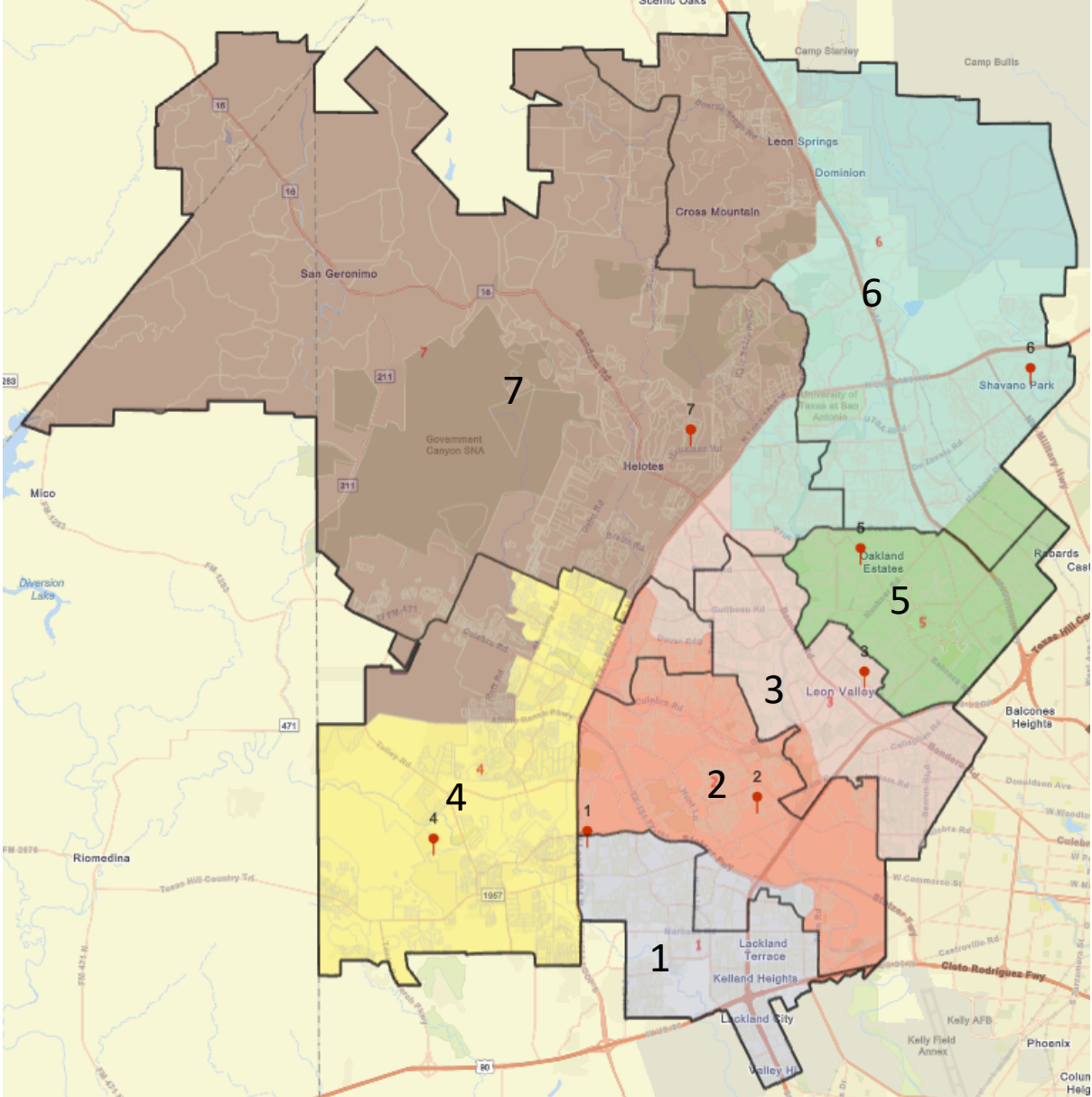
Trustee District	VOTING AGE POPULATION (VAP) PERCENTAGES						CITIZEN VOTING AGE POPULATION (CVAP) PERCENTAGES					
	Anglo	Asian	Black	Hispanic	Other	Total	Anglo	Asian	Black	Hispanic	Other	Total
1	17.5%	2.4%	7.6%	69.5%	3.0%	100.0%	18.6%	1.7%	9.3%	68.9%	1.5%	100%
2	22.5%	2.9%	7.8%	63.5%	3.3%	100.0%	24.6%	1.2%	7.7%	63.8%	2.7%	100%
3	27.5%	3.1%	4.9%	61.5%	3.0%	100.0%	31.6%	2.1%	4.9%	60.4%	1.0%	100%
4	31.6%	4.4%	9.7%	50.0%	4.3%	100.0%	33.5%	2.9%	10.6%	50.6%	2.4%	100%
5	33.3%	9.3%	7.6%	46.0%	3.9%	100.0%	38.8%	3.7%	5.8%	49.7%	2.1%	100%
6	38.2%	7.7%	6.5%	44.0%	3.7%	100.0%	43.5%	5.1%	7.5%	41.9%	2.0%	100%
7	42.5%	6.4%	5.8%	41.4%	3.9%	100.0%	48.5%	3.9%	4.6%	41.1%	2.0%	100%
TOTALS	30.5%	5.3%	7.1%	53.6%	3.6%	100.0%	33.6%	2.9%	7.1%	54.5%	1.9%	100%

VAP: Voting Age Population

SOURCE: Total Population and Voting Age Population summarized from 2020 Census PL 94-171 Redistricting Data at the block level.

Citizen Voting Age Population data was extrapolated from 2010 Block Group Data using the 2015-2019 American Community Survey

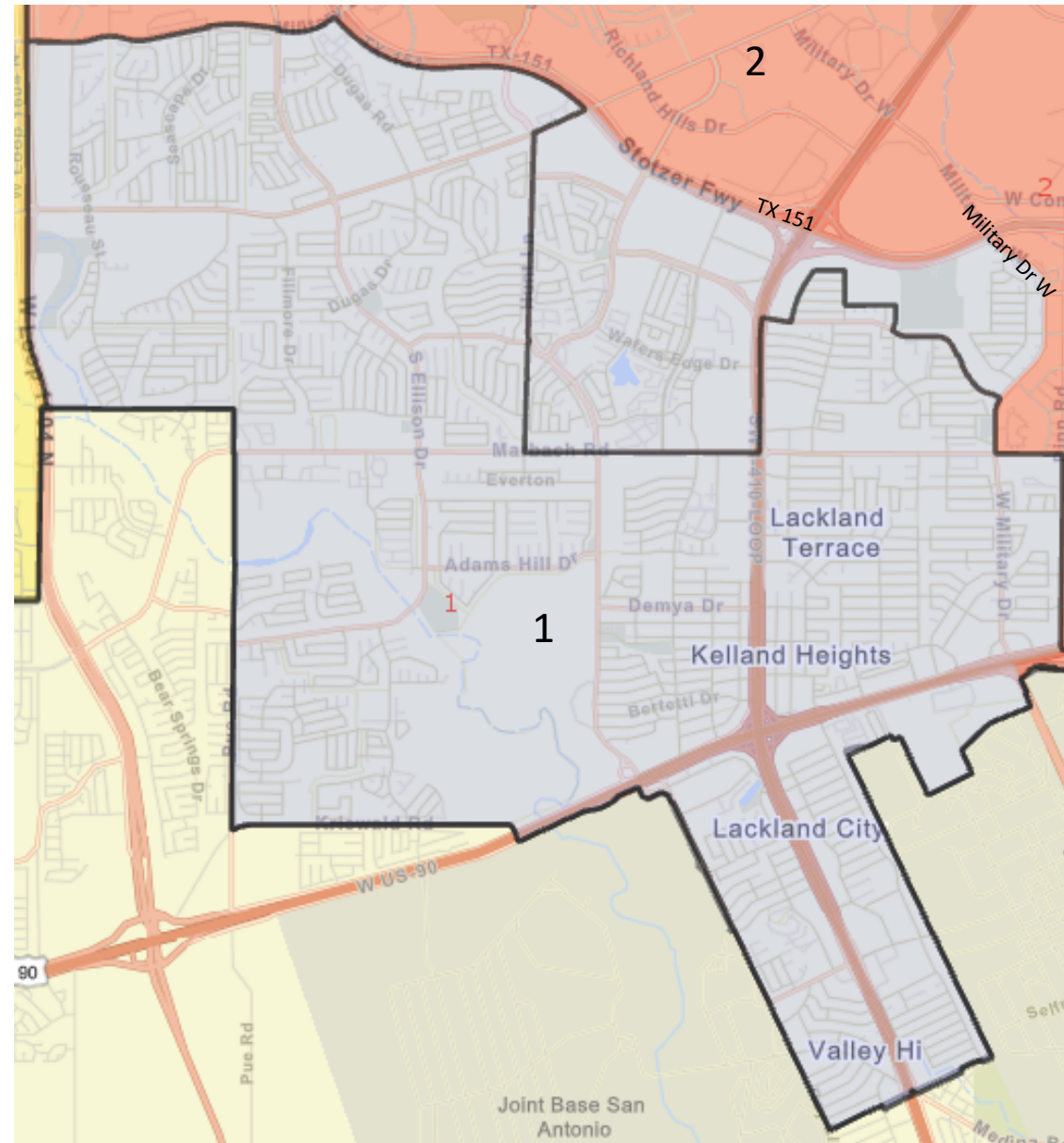
Northside ISD Plan A vs Current



———— Current Boundary

Northside ISD

Plan A SMD 1



Trustee Address



Current Boundary

Northside ISD

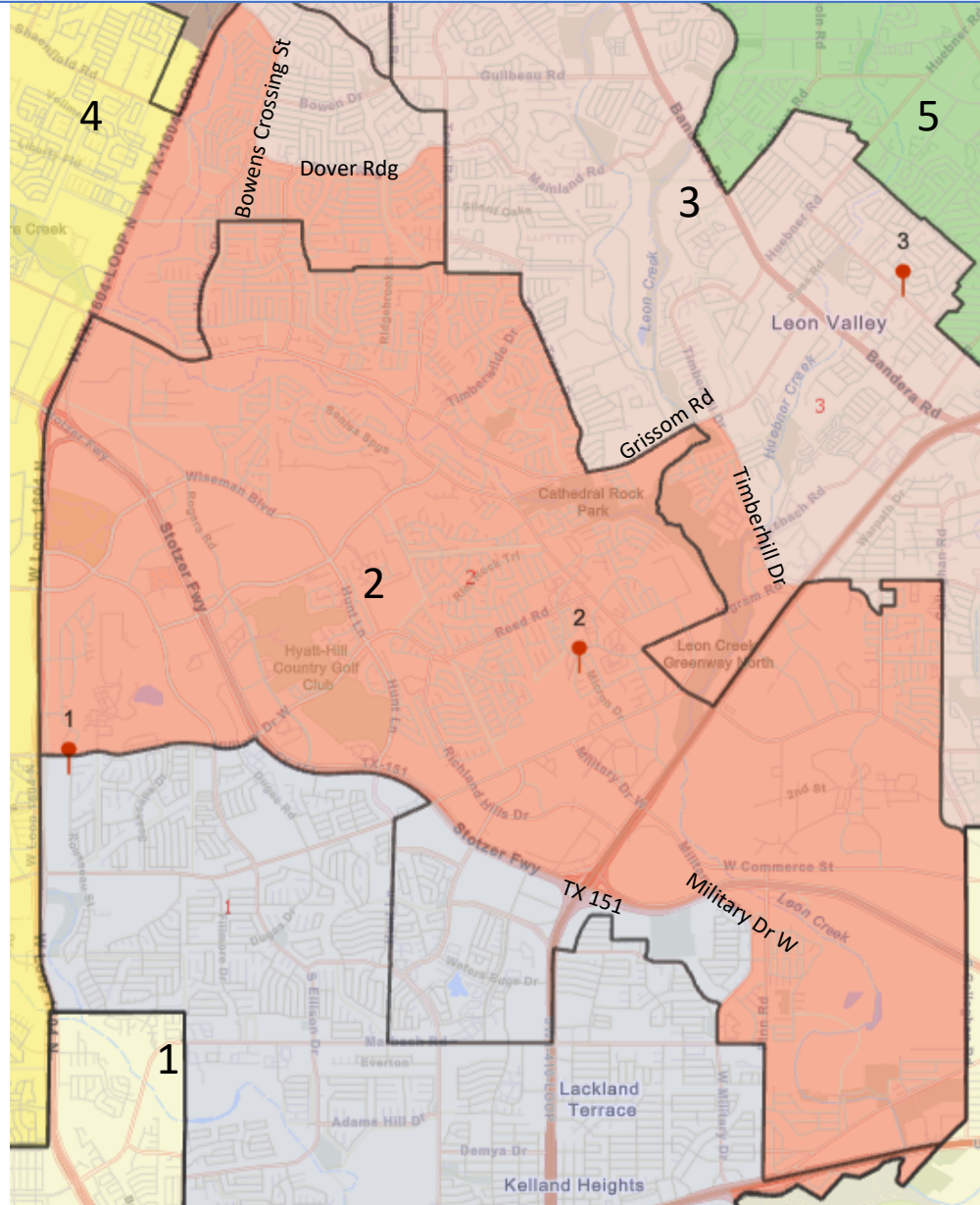
Plan A SMD 2



Trustee Address

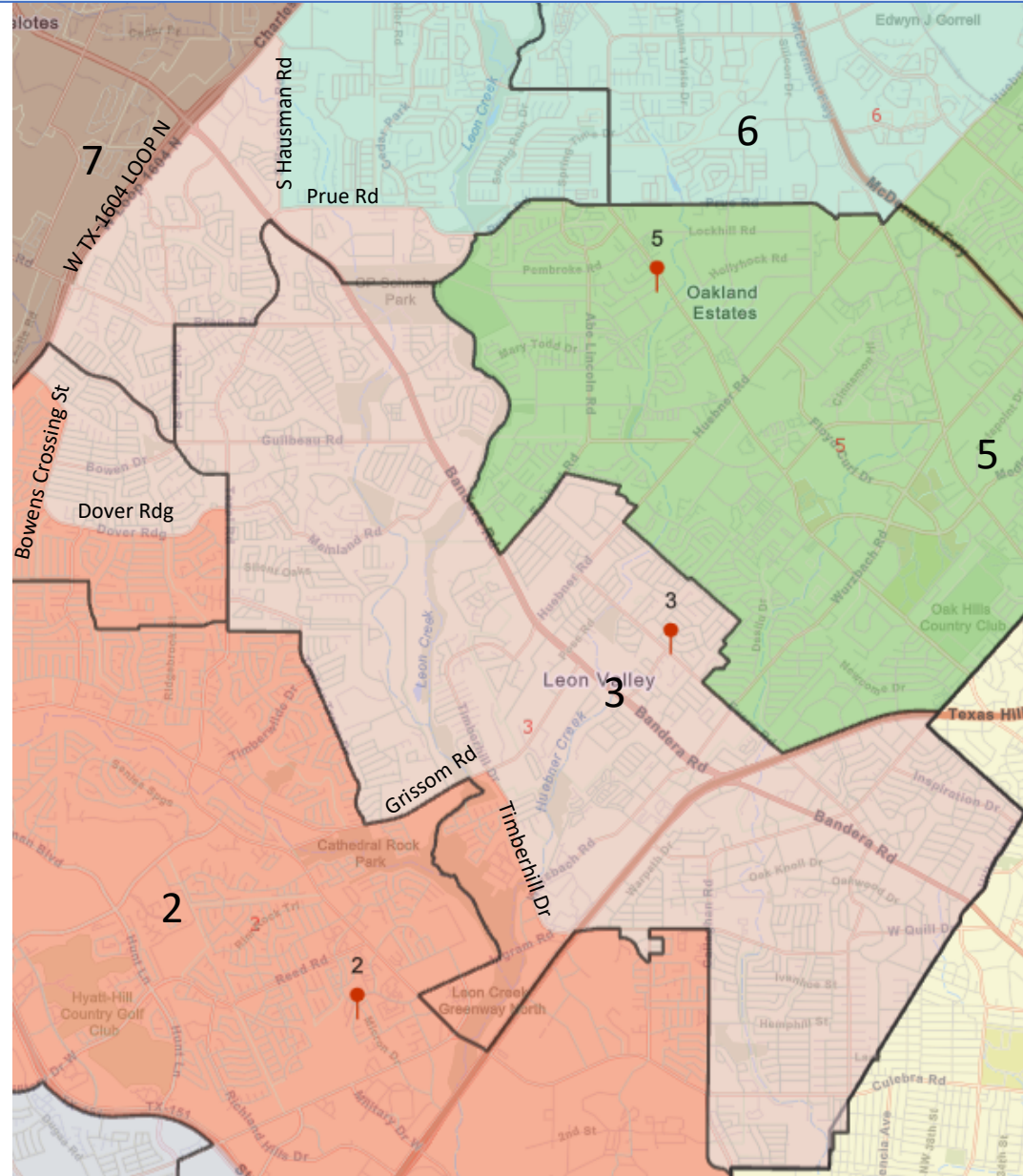


Current Boundary



Northside ISD

Plan A SMD 3



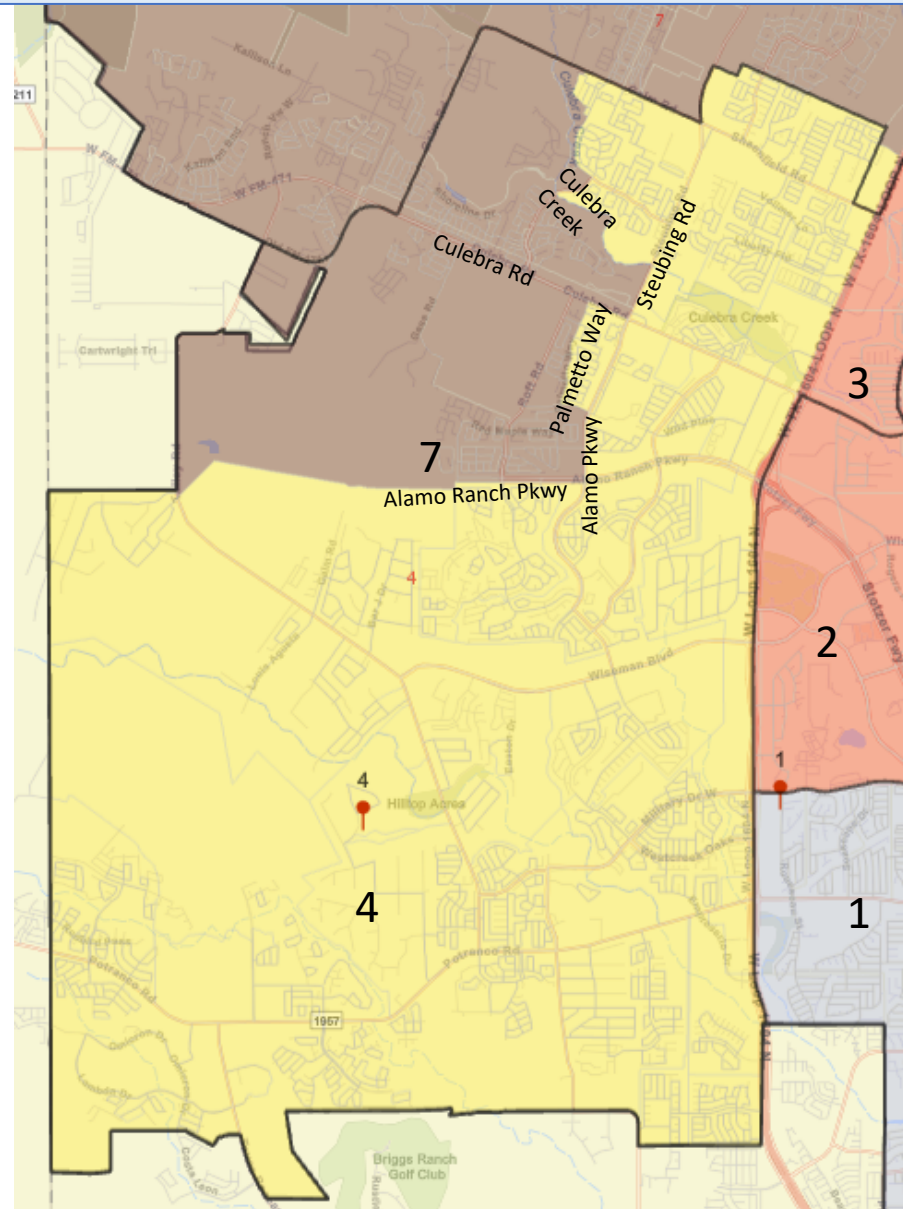
Trustee Address



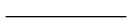
Current Boundary

Northside ISD

Plan A SMD 4



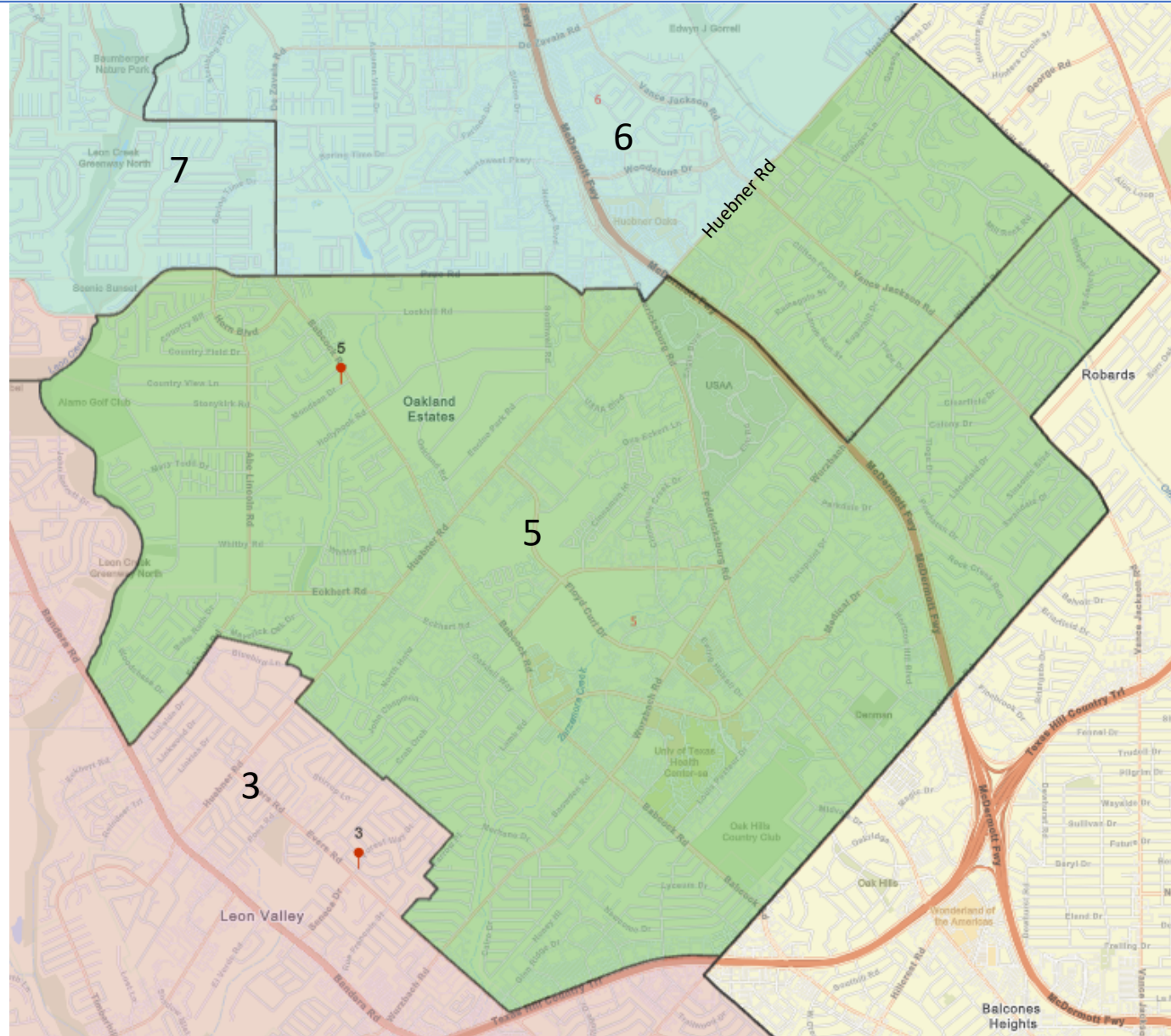
Trustee Address



Current Boundary

Northside ISD

Plan A SMD 5



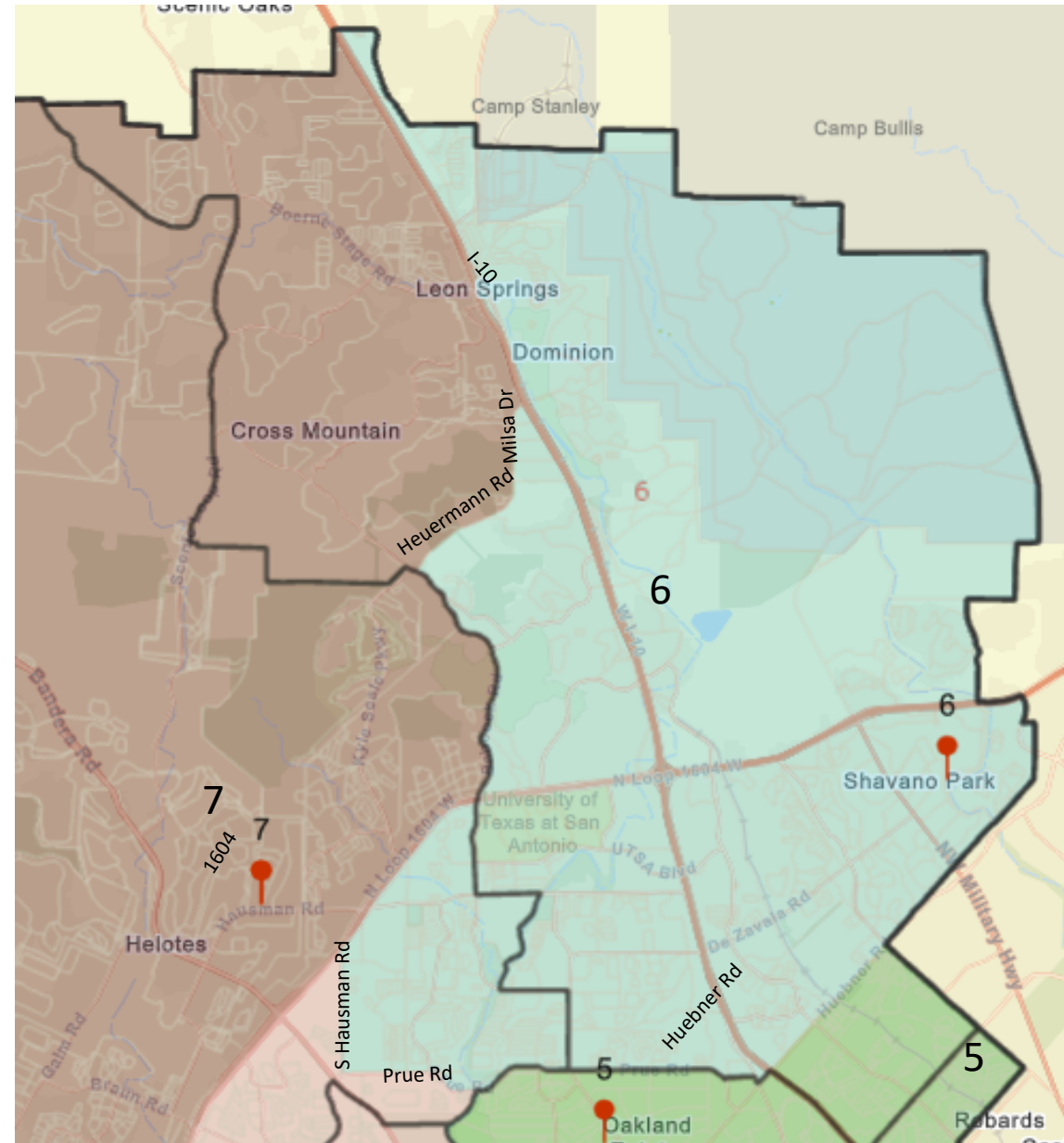
Trustee Address



Current Boundary

Northside ISD

Plan A SMD 6



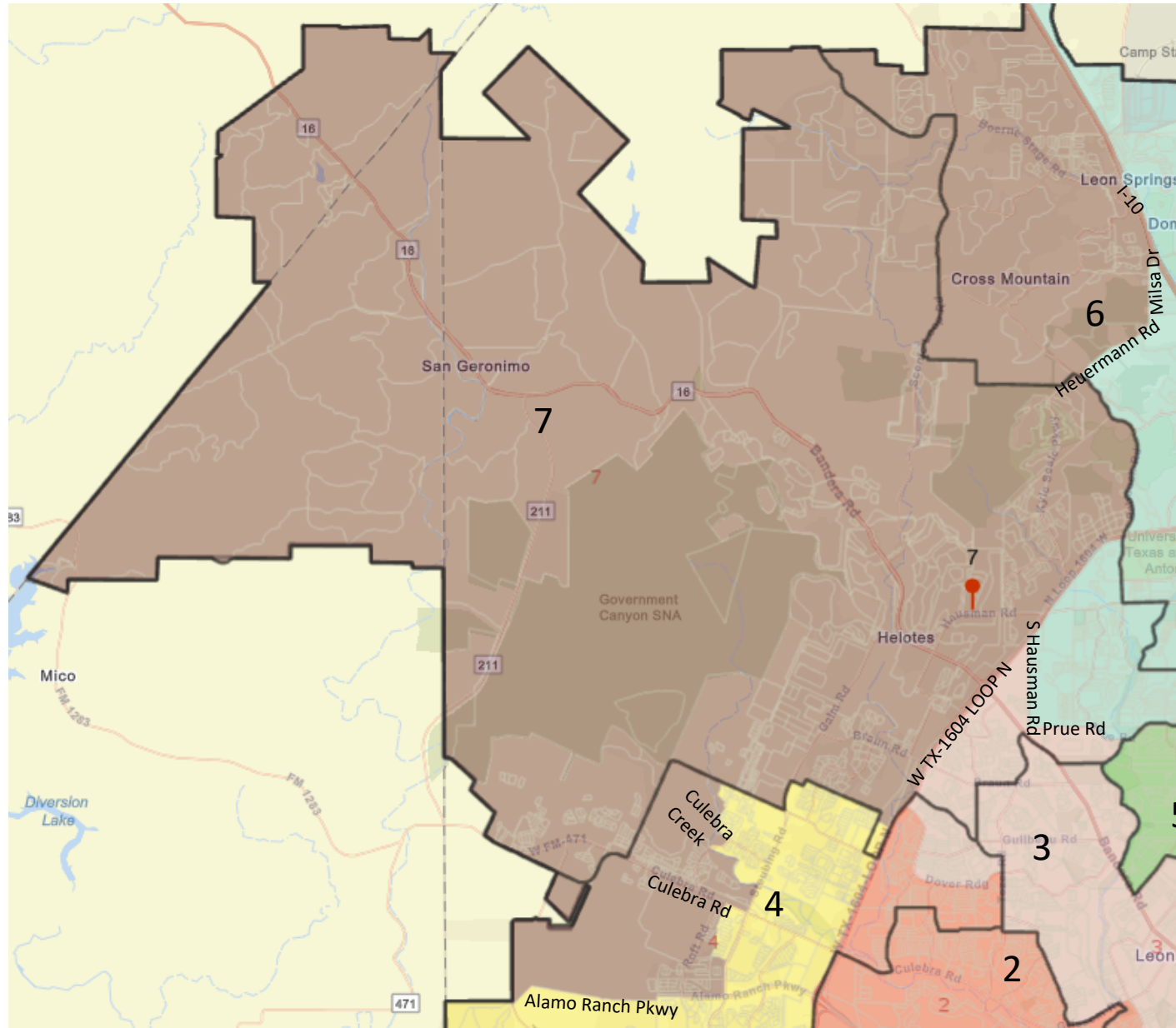
Trustee Address



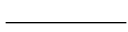
Current Boundary

Northside ISD

Plan A SMD 7



Trustee Address



Current Boundary

Northside ISD

District 1 Comparison

DISTRICT 1 - Plan Comparison			
Category	2010	Current	Plan A
Population Totals			
Total Anglo Population	14,404	12,489	14,949
Total Asian Population	1,260	1,470	1,971
Total Black Population	5,346	5,268	6,966
Total Hispanic	52,200	60,184	70,584
Total Other Population	1,621	2,481	3,064
Total Population	74,831	81,892	97,534
Total Population Percentages			
Total Anglo Population	19.2%	15.3%	15.3%
Total Asian Population	1.7%	1.8%	2.0%
Total Black Population	7.1%	6.4%	7.1%
Total Hispanic	69.8%	73.5%	72.4%
Total Other Population	2.2%	3.0%	3.1%
Total Population	100.0%	100.0%	100.0%
Voting Age Population Percentages			
Total Anglo VAP	22.6%	17.4%	17.5%
Total Asian VAP	2.1%	2.2%	2.4%
Total Black VAP	7.7%	6.9%	7.6%
Total Hispanic VAP	65.8%	70.6%	69.5%
Total Other VAP	1.8%	2.9%	3.0%
Total VAP	100.0%	100.0%	100.0%
Citizen Voting Age Population Percentages			
Total Anglo CVAP	N/A	18.8%	18.6%
Total Asian CVAP	N/A	1.7%	1.7%
Total Black CVAP	N/A	8.3%	9.3%
Total Hispanic CVAP	N/A	69.5%	68.9%
Total Other CVAP	N/A	1.6%	1.5%
Total CVAP	N/A	100%	100%
* 2010 CVAP - Asian populations are included in "Other"			

Northside ISD

District 2 Comparison

DISTRICT 2 - Plan Comparison			
Category	2010	Current	Plan A
Population Totals			
Total Anglo Population	15,883	17,144	18,626
Total Asian Population	1,583	2,698	2,526
Total Black Population	5,811	7,411	6,840
Total Hispanic	51,340	60,122	61,060
Total Other Population	1,637	3,114	3,131
Total Population	76,254	90,489	92,183
Total Population Percentages			
Total Anglo Population	20.8%	18.9%	20.2%
Total Asian Population	2.1%	3.0%	2.7%
Total Black Population	7.6%	8.2%	7.4%
Total Hispanic	67.3%	66.4%	66.2%
Total Other Population	2.1%	3.4%	3.4%
Total Population	100.0%	100.0%	100.0%
Voting Age Population Percentages			
Total Anglo VAP	23.9%	21.1%	22.5%
Total Asian VAP	2.4%	3.2%	2.9%
Total Black VAP	8.2%	8.6%	7.8%
Total Hispanic VAP	63.6%	63.7%	63.5%
Total Other VAP	1.8%	3.4%	3.3%
Total VAP	100.0%	100.0%	100.0%
Citizen Voting Age Population Percentages			
Total Anglo CVAP	N/A	22.6%	24.6%
Total Asian CVAP	N/A	1.3%	1.2%
Total Black CVAP	N/A	9.5%	7.7%
Total Hispanic CVAP	N/A	64.0%	63.8%
Total Other CVAP	N/A	2.7%	2.7%
Total CVAP	N/A	100%	100%
* 2010 CVAP - Asian populations are included in "Other"			

Northside ISD

District 3 Comparison

DISTRICT 3 - Plan Comparison			
Category	2010	Current	Plan A
Population Totals			
Total Anglo Population	19,014	16,882	23,849
Total Asian Population	1,669	2,179	2,764
Total Black Population	3,154	3,885	4,571
Total Hispanic	47,593	50,416	61,392
Total Other Population	1,163	2,257	3,134
Total Population	72,593	75,619	95,710
Total Population Percentages			
Total Anglo Population	26.2%	22.3%	24.9%
Total Asian Population	2.3%	2.9%	2.9%
Total Black Population	4.3%	5.1%	4.8%
Total Hispanic	65.6%	66.7%	64.1%
Total Other Population	1.6%	3.0%	3.3%
Total Population	100.0%	100.0%	100.0%
Voting Age Population Percentages			
Total Anglo VAP	29.8%	25.0%	27.5%
Total Asian VAP	2.4%	3.1%	3.1%
Total Black VAP	4.4%	5.2%	4.9%
Total Hispanic VAP	62.0%	63.9%	61.5%
Total Other VAP	1.4%	2.8%	3.0%
Total VAP	100.0%	100.0%	100.0%
Citizen Voting Age Population Percentages			
Total Anglo CVAP	N/A	28.5%	31.6%
Total Asian CVAP	N/A	2.4%	2.1%
Total Black CVAP	N/A	4.9%	4.9%
Total Hispanic CVAP	N/A	63.4%	60.4%
Total Other CVAP	N/A	0.9%	1.0%
Total CVAP	N/A	100%	100%
* 2010 CVAP - Asian populations are included in "Other"			

Northside ISD

District 4 Comparison

DISTRICT 4 - Plan Comparison			
Category	2010	Current	Plan A
Population Totals			
Total Anglo Population	24,467	37,890	28,051
Total Asian Population	1,885	5,066	3,838
Total Black Population	5,566	11,915	9,126
Total Hispanic	38,945	72,642	51,580
Total Other Population	2,048	6,675	5,017
Total Population	72,911	134,188	97,612
Total Population Percentages			
Total Anglo Population	33.6%	28.2%	28.7%
Total Asian Population	2.6%	3.8%	3.9%
Total Black Population	7.6%	8.9%	9.3%
Total Hispanic	53.4%	54.1%	52.8%
Total Other Population	2.8%	5.0%	5.1%
Total Population	100.0%	100.0%	100.0%
Voting Age Population Percentages			
Total Anglo VAP	37.0%	31.0%	31.6%
Total Asian VAP	3.0%	4.2%	4.4%
Total Black VAP	7.8%	9.2%	9.7%
Total Hispanic VAP	50.0%	51.4%	50.0%
Total Other VAP	2.2%	4.2%	4.3%
Total VAP	100.0%	100.0%	100.0%
Citizen Voting Age Population Percentages			
Total Anglo CVAP	N/A	33.2%	33.5%
Total Asian CVAP	N/A	2.5%	2.9%
Total Black CVAP	N/A	9.1%	10.6%
Total Hispanic CVAP	N/A	52.8%	50.6%
Total Other CVAP	N/A	2.3%	2.4%
Total CVAP	N/A	100%	100%
* 2010 CVAP - Asian populations are included in "Other"			

Northside ISD

District 5 Comparison

DISTRICT 5 - Plan Comparison			
Category	2010	Current	Plan A
Population Totals			
Total Anglo Population	26,213	24,017	28,695
Total Asian Population	5,602	9,123	9,532
Total Black Population	4,963	6,812	7,525
Total Hispanic	35,487	39,218	45,549
Total Other Population	1,783	3,455	3,984
Total Population	74,048	82,625	95,285
Total Population Percentages			
Total Anglo Population	35.4%	29.1%	30.1%
Total Asian Population	7.6%	11.0%	10.0%
Total Black Population	6.7%	8.2%	7.9%
Total Hispanic	47.9%	47.5%	47.8%
Total Other Population	2.4%	4.2%	4.2%
Total Population	100.0%	100.0%	100.0%
Voting Age Population Percentages			
Total Anglo VAP	39.2%	32.2%	33.3%
Total Asian VAP	7.5%	10.2%	9.3%
Total Black VAP	6.4%	7.9%	7.6%
Total Hispanic VAP	44.8%	45.7%	46.0%
Total Other VAP	2.1%	3.9%	3.9%
Total VAP	100.0%	100.0%	100.0%
Citizen Voting Age Population Percentages			
Total Anglo CVAP	N/A	38.2%	38.8%
Total Asian CVAP	N/A	3.7%	3.7%
Total Black CVAP	N/A	5.8%	5.8%
Total Hispanic CVAP	N/A	50.2%	49.7%
Total Other CVAP	N/A	2.1%	2.1%
Total CVAP	N/A	100%	100%
* 2010 CVAP - Asian populations are included in "Other"			

Northside ISD

District 6 Comparison

DISTRICT 6 - Plan Comparison			
Category	2010	Current	Plan A
Population Totals			
Total Anglo Population	36,135	40,561	34,821
Total Asian Population	4,226	7,353	7,443
Total Black Population	3,326	5,996	6,012
Total Hispanic	27,526	43,693	44,201
Total Other Population	1,627	4,316	4,010
Total Population	72,840	101,919	96,487
Total Population Percentages			
Total Anglo Population	49.6%	39.8%	36.1%
Total Asian Population	5.8%	7.2%	7.7%
Total Black Population	4.6%	5.9%	6.2%
Total Hispanic	37.8%	42.9%	45.8%
Total Other Population	2.2%	4.2%	4.2%
Total Population	100.0%	100.0%	100.0%
Voting Age Population Percentages			
Total Anglo VAP	51.9%	41.8%	38.2%
Total Asian VAP	6.0%	7.1%	7.7%
Total Black VAP	4.9%	6.0%	6.5%
Total Hispanic VAP	35.3%	41.3%	44.0%
Total Other VAP	2.0%	3.7%	3.7%
Total VAP	100.0%	100.0%	100.0%
Citizen Voting Age Population Percentages			
Total Anglo CVAP	N/A	46.4%	43.5%
Total Asian CVAP	N/A	4.7%	5.1%
Total Black CVAP	N/A	6.8%	7.5%
Total Hispanic CVAP	N/A	40.2%	41.9%
Total Other CVAP	N/A	1.9%	2.0%
Total CVAP	N/A	100%	100%
* 2010 CVAP - Asian populations are included in "Other"			

Northside ISD

District 7 Comparison

DISTRICT 7 - Plan Comparison			
Category	2010	Current	Plan A
Population Totals			
Total Anglo Population	32,784	35,931	35,923
Total Asian Population	3,539	5,808	5,623
Total Black Population	3,539	5,005	5,252
Total Hispanic	32,088	48,070	39,979
Total Other Population	1,774	4,196	4,154
Total Population	73,724	99,010	90,931
Total Population Percentages			
Total Anglo Population	44.5%	36.3%	39.5%
Total Asian Population	4.8%	5.9%	6.2%
Total Black Population	4.8%	5.1%	5.8%
Total Hispanic	43.5%	48.6%	44.0%
Total Other Population	2.4%	4.2%	4.6%
Total Population	100.0%	100.0%	100.0%
Voting Age Population Percentages			
Total Anglo VAP	48.0%	38.9%	42.5%
Total Asian VAP	5.1%	6.1%	6.4%
Total Black VAP	4.2%	5.2%	5.8%
Total Hispanic VAP	40.9%	46.2%	41.4%
Total Other VAP	1.9%	3.7%	3.9%
Total VAP	100.0%	100.0%	100.0%
Citizen Voting Age Population Percentages			
Total Anglo CVAP	N/A	44.5%	48.5%
Total Asian CVAP	N/A	3.6%	3.9%
Total Black CVAP	N/A	4.9%	4.6%
Total Hispanic CVAP	N/A	45.3%	41.1%
Total Other CVAP	N/A	1.7%	2.0%
Total CVAP	N/A	100%	100%
* 2010 CVAP - Asian populations are included in "Other"			