

Chumbley Elementary School

13969 Blanco River Run
San Antonio, TX 78253



School Hours 7:45 am - 3:00 pm

Principal: Jeremy Day

Associate Principal: Christan Woods



Student & Parent Playbook



INTRO

SECTION A

SECTION B

SECTION C

SECTION D

SECTION E

SECTION F



Jeremy Day
Principal



Christan Woods
Associate Principal

Welcome Champions!

Dear Chumbley Families,

My name is Jeremy Day and I am thrilled and honored to introduce myself as the principal of the brand new M'Lissa Chumbley Elementary School. As a dedicated educator with a passion for fostering academic excellence and nurturing the growth of young minds, I am eager to embark on this exciting journey alongside the vibrant families and community members.

I have spent the vast majority of my educational career in Northside ISD. I started at Allen Elementary in 1996 and have gone on to serve communities at 10 different Northside campuses as a teacher and administrator. I have been very fortunate to continue my administrative journey at Beard Elementary as principal and associate principal for the last eight years. I come from a family of educators, my mother was an instructional assistant, my father was a speech language pathologist, and my wife is currently teaching in Northside ISD.

Building a new elementary school is not only a monumental undertaking but also a profound opportunity to create a nurturing, innovative, and inclusive learning environment where every child can thrive. It is my firm belief that education extends far beyond the confines of the classroom, and I am committed to collaborating closely with parents, teachers, staff, and community partners to ensure the development and success of each and every student.

At Chumbley ES, we will strive to cultivate a culture of curiosity, creativity, and kindness, where every child feels valued, supported, and empowered to reach their full potential. Through rigorous academics, enriching extracurricular activities, and meaningful community engagement initiatives, we aim to inspire a lifelong love of learning and equip our students with the skills, knowledge, and character traits needed to succeed in an ever-changing world.

I am genuinely excited about the possibilities that lie ahead and look forward to getting to know each and every one of you in the coming weeks and months. Together, let us create a school that not only meets the needs of our community but also exceeds all expectations, setting a new standard of excellence in education.

Jeremy Day
Principal

MISSION &
VISION

SAFETY &
EXPECTATIONS

DRESS CODE

LUNCH &
BIRTHDAYS

RECESS &
HALLWAY

SUPPORT
STAFF

EVENTS &
TRADITIONS

Chumbley's Mission and Vision

Chumbley Mission Statement

Create a safe learning environment for all Champions



Chumbley Vision Statement

All students will grow socially, emotionally, and academically to reach their full potential

Chumbley Core Beliefs

- We believe through modeling empathy and integrity, we will foster a community of growth and perseverance.
- We believe that students and staff will come to school with a positive and caring attitude ready to make a difference.
- We believe that effective collaboration creates meaningful work.
- We believe through ambition we can achieve high expectations.
- We believe our Champion Family will respect and support each other to grow academically and emotionally with integrity.

NISD Learner Profile

Champions will be:

Creators
Leaders
Collaborators
Learners
Communicators
Innovators
Critical Thinkers
Solution-Finders

Get Connected

There are many ways to get connected with Chumbley!

- Join our [Facebook](#) Group
- Follow these Twitter accounts
 - [@NISDChumbley](#)
 - @JeremyDay73
 - @ChristanWoods
 - @NISD
- School-Wide Emails - make sure the office has your current email
- School-Wide Callouts - make sure the office has your current phone number

Safety at Northside ISD



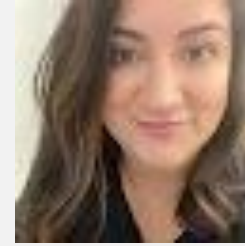
Please watch the video above for a message from our Superintendent Dr. John Craft, visit our [Safety First Website](#) and/or refer to the [one-page Safety First Attachment](#) for more information.

Please note: A government issued photo ID is required for all visitors to the campus.

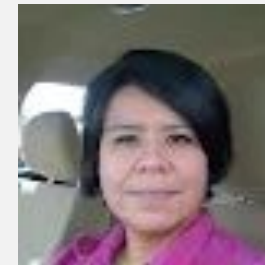
210-397-7233
24 Hours • Anonymous
text: safe@nisd.net

**NORTHSIDE
SAFE
LINE**

Our Amazing Office Staff



Courtney Basse
Attendance Secretary



Mercy Campos
Office Clerk




Brittany Vela
Principal Secretary &
Bookkeeper



Diane Harpin
School Nurse

Be a C.H.A.M.P.!!!

Chumbley School-Wide Behavior Plan Be a C.H.A.M.P.!!!

			Classrooms & All Learning Areas	Hallways, Stairways & Restroom	Cafeteria	Playground	Arrival & Dismissal
C	Conversation		Low volume, raise hand to speak	Silent or whispering	Conversational at your table	Outside voices, no shouting	Silent or whispering
H	Help		Raise your hand or use a designated signal to ask for help.	Find a nearby teacher or staff member.	Raise your hand or go to the nearest staff member.	Approach an adult on duty if you need assistance.	Approach an adult on duty if you need assistance.
A	Activity		<ul style="list-style-type: none"> •Be on time •Be honest •Speak up for self and others •Take responsibility for your actions •Meet expectations •Complete work on time •Follow the rules 	<ul style="list-style-type: none"> •Walking quietly to your next destination. •Be respectful of our school environment. 	<ul style="list-style-type: none"> •Eat your lunch and use good table manners. •Be polite to peers •Don't play with food or drinks •Show respect to cafeteria staff 	<ul style="list-style-type: none"> •Be a good sport •Use kinds words and actions •Play fairly •Include others 	<ul style="list-style-type: none"> •Keep things in backpacks •Stay seated •Use crosswalks
M	Movement		<ul style="list-style-type: none"> •Stay in your seat unless you have permission to move. •Use walking feet when moving around the classroom 	<ul style="list-style-type: none"> •Walk to the right side (even when you want to run) •Greet friends with a wave •Pick up trash when you see it 	<ul style="list-style-type: none"> •Listen to directions from staff •Stay seated until dismissed •Move carefully when throwing away trash. 	<ul style="list-style-type: none"> •Line up promptly when you hear the whistle •Have fun •Make good choices 	<ul style="list-style-type: none"> •Pay attention to your surroundings •Make safe choices for self and others
P	Participation		<ul style="list-style-type: none"> •Actively engage in lessons, ask questions, and contribute to discussions. •Try your best •Challenge yourself •Be positive •Complete assignments on time •Accept and fulfill responsibilities 	<ul style="list-style-type: none"> •Demonstrate self-control •Be a good role model 	<ul style="list-style-type: none"> •Make good food choices •Demonstrate self-control •Be a good role model 	<ul style="list-style-type: none"> •Join games, share, include others •Report equipment issues to an adult •Give it your best •Choose positive influences 	<ul style="list-style-type: none"> •Follow routines •Be a good role model •Seek help when needed

Character Counts



Chumbley is a "Character Counts" campus. We focus on six important traits we call the pillars of character. They are trustworthiness, respect, responsibility, fairness, caring, and citizenship. Teachers can often be heard telling students they are being TRFFCC (terrific) students.

Attendance

Chumbley school hours are 7:45am-3:00pm. **Doors open at 7:00am.** Students are marked tardy if they are not in the classroom at 7:45am. Students are marked absent if they arrive at school after 9:00 am or if they do not attend school for the day. *Students must bring a written excuse to school or send an email following an absence explaining why they were absent.* Email the teacher and please copy our **attendance secretary Courtney Basse** at courtney.basse@nisd.net. Refer to the [NISD Student-Parent Handbook](#) for more information regarding absences.

If your child needs to be taken out of school early, please check in with the office and sign him/her out. **For safety purposes, a government issued photo ID is required.** The office will contact the teacher and the student will be sent to the office. Students are responsible for any work they missed while absent.

Elementary School Pre-K - 5th



Texas Compulsory Attendance Law

Students must attend class **90%** of the school year



Unexcused & Excused Absences

ALL absences count! Students who have **more than 18 total** absences are at risk of failing. Parent/Guardians may also be issued a municipal court warning and possibly pay a fine.



Medical Appointments

Appointments must be at the **start** or **end** of the school day to be counted as **HEALTH** and not as an absence. If the student is out the **entire day**, they are absent.



Why do I need to send a note?

If a student's attendance case is sent to court, a committee will take into consideration how many absences were excused and unexcused.



Tardies

Students who arrive after 9am are considered **ABSENT**. **This does not mean your child should stay home.** Staying home will make your student fall behind by missing an entire day of instruction.



Communication

If your child is ill and will be out of school for **more than 1 day**, please inform your child's classroom teacher. They should be your first line of communication.



Special Circumstances

Every student's situation is different. If there are barriers keeping your student from being at school, reach out to your campus. There are resources and people to help.



Arrival

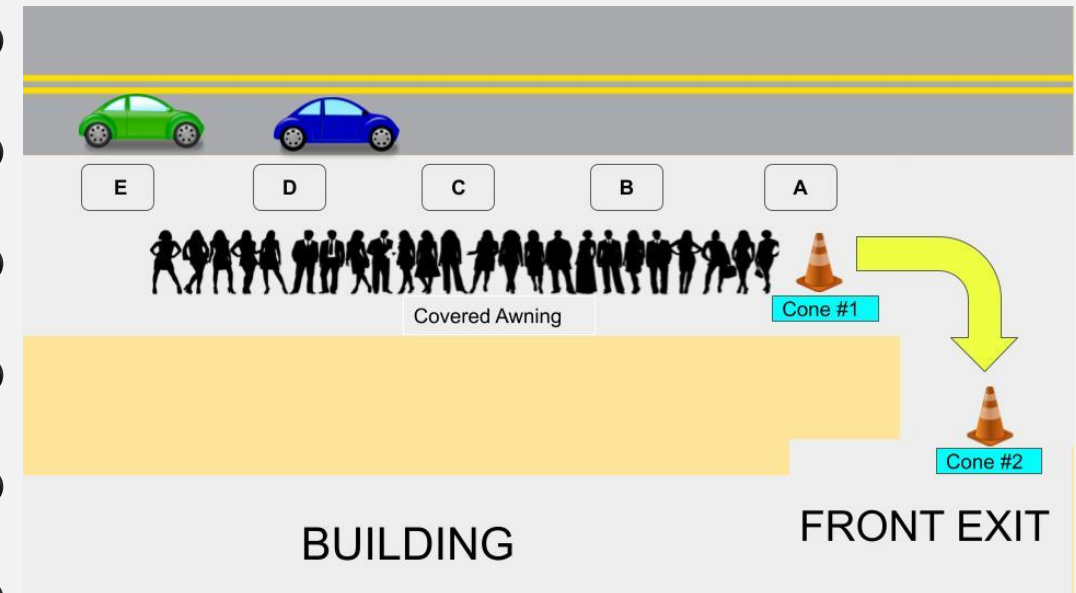
- Chumbley doors open at **7:00 am** for student arrival.
- If students are eating breakfast at school, they may proceed to the cafeteria to get their breakfast and eat.
- If students in grades K-5 are not eating breakfast, they will proceed to their classrooms and sit quietly in the hallway.
- Students are tardy after **7:45 am** and get a tardy slip upon arrival. Students will give this tardy slip to the classroom teacher.
- **Parents may walk students to their classrooms from 7:00am-7:50am. Please park in the designated parking spots only and use the crosswalk when going from the parking lot to the school and vice versa.**
- If you are pulling students out of school early, please pick them up by 2:30pm.

Dismissal

- Your child's safety is very important to us. We will not change your child's dismissal routine **without written permission from you.** A verbal request from your child will not be accepted. A written note, e-mail or a call to the office, before noon, is needed when your child has a change in his/her dismissal routine.
- The same applies when your child attends any extracurricular activities after school such as tutorials, scouts, club meetings, or after school programs.
- Caution: If using email to inform teachers of changes in dismissal, please be aware that substitute teachers do not have access to teacher emails. So if you do not get a response to your email from the classroom teacher, please call the school.
- **Please park in designated parking spots only and use the crosswalk when going from the parking lot to the school and vice versa.**

Rainy Day Dismissal

- Parents who walk up to retrieve their child during a rainy day dismissal will line up behind cone #1. *see diagram
- Please have your information sheet with your child's name/grade/teacher's name in hand. If you do not have one, one will be provided to you while you are waiting in line.
- Hold up your sheet and someone will come with a walkie-talkie to announce your child's name.
- After your child's name has been announced over the walkie-talkie, line up behind cone #2 and wait for your child to exit the building. *see diagram



Student Dress Code

Students are expected to wear appropriate clothing to school each day.

- Shorts of mid-thigh length may be worn at all school levels. Suggestive and/or indecent shorts will be prohibited.
- Mid-thigh length skirts, skorts, and dresses may be worn at all levels. There should not be a cut or slit in the clothing that extends above the mid-thigh. Suggestive and/or indecent styles will be prohibited.
- Appropriate footwear must be worn; footwear which has toes reinforced with steel, hard plastics or similar materials are specifically prohibited.
- Hair must be neat and clean. Unconventional hairstyles that distract from teaching and learning will be prohibited.

Student Dress Code

- Any clothes that are suggestive or indecent or which cause a distraction will be prohibited. Specifically, oversized clothing, tank tops, muscle shirts, halter/crop tops, spaghetti straps, exposed backs or midriffs, and see-through garments are prohibited.
- Indecent/inappropriate patches, writings, or drawings on clothing are prohibited. Undergarments must not be visible.
- All pants are to be worn at the waist (no "sagging") Tight fitting pants (e.g. tights, spandex, bicycle pants, etc.) are also prohibited. Frays or holes above the knees are prohibited.
- Body piercing jewelry is prohibited except for rings, studs or other traditional jewelry. Any piercing that distracts the teaching and learning environment will be prohibited.

[NISD Dress and Grooming Handbook Page](#)

Cell Phones, Smart Watches & Electronic Devices

- All personal communication devices to include **SMART watches, personal tablets and cellphones** must remain in backpacks during the school day. Phones may not be taken to recess.
- After ***one warning***, students may be asked to turn in their personal communication devices to the teacher if it is a distraction to the learning environment.
- **The school is not responsible for personal technology items brought to school.**

No Pets on Campus

For the safety of all, pets or animals of any kind are not allowed on campus at anytime, including dismissal. This is a district expectation due to allergies, unforeseen aggression, and such.

Lunch with Students

- Parents may come to school to have lunch with their children Monday-Friday.
- **A government issued photo ID is required to be on campus each time that you visit.** Military IDs are not accepted by our system. ****No "Fast Passes" will be distributed this year.***
- Students may not invite friends/classmates to join them for lunch.
- Please clean up all trash and keep the area clean for all to enjoy.
- Students must promptly rejoin their class when their designated lunch time ends.

Cafeteria Expectations

Before Lunch

- Teachers will take students to the restroom and to wash hands **prior** to lunch.
- Students will walk when entering the cafeteria.
- Students bringing lunch that do not need to make a purchase, will go directly to the assigned table.
- Students purchasing only snacks or milk will go to the front of the line.
- Students purchasing a complete lunch will stand in a single file line while waiting to enter the food area.
- Students will stand on "waiting spots" when they enter the food area.
- Students will not enter the food area if there is no spot available.

During Lunch

- Once lunches are obtained, students will fill in the seats at the table as they arrive. Students will not skip seats/save seats for their friends.

During Lunch (cont.)

- They will sit in their seat until dismissed with both feet in front of them facing forward.
- Students will need permission to leave their seat by raising their hand.
- Students will use good table manners (i.e. talking with inside voices, keeping hands and feet to themselves.)
- **Sharing food and drinks is not permitted.**

After Lunch

- When dismissed, students will use the clean up procedure:
 1. Stand up and push in chairs.
 2. Clean up all trash and check the floor.
 3. Walk around the table in a circle and throw away the trash.
- Students will line up on the tape in straight line
- Students will only take sealed food or drinks from the cafeteria when lunch is over.
- **Please visit the [NISD Child Nutrition Website](#) for information regarding: Menus, Pricing, Free & Reduced Meal Information and much more.**

Student Birthdays

- If parents want their child's birthday recognized in the classroom, **please contact the teacher prior to purchasing school birthday treats for the class**; due to student dietary restrictions and allergies, teacher discretion will be used.
- Parents have the option to send in:
 - **Store-bought treats with napkins or plates** (ex. Cupcakes, donuts, cookies, etc. are acceptable),
 - Purchase **ice cream in the cafeteria** (email our cafeteria manager at caf237@nisd.net and copy the homeroom teacher on the email) , or
 - Send in **non-food goodie bags**
- Birthdays will be acknowledged at the end of the day without parent attendance to minimize the loss of instructional time.
- **Balloons, flowers, decoration, etc. are not allowed.**
- Teachers are permitted to pass out birthday invitations for off-campus parties or forward emails with birthday invitations BUT **all students must be included or all boys or all girls.**

Lunch, Supplies & Snacks

- Best practice is to send lunches and supplies with students in their backpacks before school begins.
- On the rare occasion that lunches need to be sent once the school day has started, **please drop off at the front office at least 30 minutes prior to your child's lunch start time.**
- **Students that do not have a lunch at the start of their lunchtime will get a tray from the cafeteria.**
- **Lunch deliveries can only be made by the parent/guardian of the student. DoorDash, GrubHub, or any other delivery service will not be accepted.**
- Check with classroom teachers about snacks.

Recess Expectations

Students will demonstrate the pillars of character at recess:

Trustworthiness	Play fairly with others.
Respectfulness	Show respect to classmates, teachers, and school property.
Responsibility	Use equipment properly and show self-control.
Fairness	Play by the rules, share and take turns. Be a team player.
Caring	Be kind, helpful forgiving and include others.
Citizenship	Help to keep our school clean

Hallway Expectations

Students will demonstrate the pillars of character in the hallway:

Trustworthiness	Take care of your needs and get back to class quickly and quietly..
Respectfulness	Walk quietly as other classes re learning.
Responsibility	Use self-control and follow teacher directions.
Fairness	Take turns when using school facilities.
Caring	Be kind and greet friends with a Gator wave.
Citizenship	Keep hallway clean and keep hands off the wall.

Student Device Care

The use of technology is an important aspect of the educational experience. Throughout the school year, all Northside students are required to access digital instructional materials and assignments daily, both during class and at home. Subject to your execution of this Agreement, Northside Independent School District (NISD) is providing your student a mobile device (Chromebook, laptop, or tablet) that is, and shall remain, the property of NISD. Northside students that are in need of a mobile device are issued a district-owned device to ensure equitable access to digital curriculum materials.

NISD agrees to provide your student with an appropriate mobile device and charger for educational purposes only. These devices are not to be used for personal, commercial, or business use.

By taking possession of a student-assigned device and charger, the parent agrees to be responsible as follows:

Students will bring the device and charger to all instructional sessions and use the device in compliance with the Acceptable Use Policy for technology found in the NISD Parent/Student Handbook. Failure to adhere to guidelines outlined in the NISD Student/Parent Handbook may result in disciplinary action, including but not limited to temporary or permanent suspension from District Technology Resources.

All NISD-provided devices are CIPA-compliant concerning internet filtering, however, it is ultimately the responsibility of the parent/guardian to monitor their students' internet activity and use of mobile devices when not at an NISD facility.

How to Unplug Your Device



Nurse

COVID-19

NISD Health Services continues to monitor the local Covid-19 cases and will make policies in response to surges or declines in Covid cases in our area. Please contact Nurse Agarwal for the latest information regarding Covid-19 protocols or visit

<https://www.nisd.net/schools/health>

EXISTING CONDITIONS

If students have existing condition (allergies, chronic disease, etc) please bring in a doctor's note stating what the disease is and it will kept on file.. These doctor's notes will be taken into consideration should students come to the clinic not feeling well. These notes will be good for one year.

MEDICATIONS

Medications (both over the counter and prescription) will only be accepted in the clinic if they are accompanied by a doctor's order/action plan. These orders/plans are good for one year. You can find the link to the student-specific medical forms that must be completed and signed by both a parent AND a physician at <https://www.nisd.net/schools/health>

STUDENT ILLNESS

If students wake up feeling sick, please keep them home. If students vomit overnight or have a temperature greater than 100.0 overnight, please keep them home. Students can return to school when they have been without a fever or vomiting for at least 24 hours without the use of any medication.

IMMUNIZATIONS

All students must have up-to-date immunizations before August 11, 2025 (first day of classes). Please verify with Nurse Harpin or with your doctor to make sure all immunization records are current and turned in to the school.

QUESTIONS

Email Nurse Harpin at diane.harpin@nisd.net

Librarian

- All students visit the library once per 6 day rotation for lessons and book checkout.
- Students may also check out books as needed most mornings from 7:30am-9:00am.
- The library is open on Tue-Fri for after school checkout from 3:00-3:15 (parents must be present with students).
- **The library will sponsor a book fair dates TBD.**
- Library volunteers are needed for book check-in, shelving books, making copies, reading incentives, book fairs, and special projects.
- Contact Chumbley librarian Kelly Torres to volunteer by email at kelly.torres@nisd.net.

Guidance Counselor

- Our Chumbley school counselors are committed to providing support to all students to ensure success in the areas of academic development, career development, and personal/social development leading to the formation of a confident, well balanced, successful individual. In doing so, students are better prepared to become independent, productive, and self-actualized adults.
- Our goal is for all students to begin to feel successful and proud of themselves in both school and life.
- Our counselors:
 - Teaches skills-based lessons that help students develop life-long skills competence.
 - Provides small group and individual counseling to intervene on behalf of students whose immediate concerns impact their social, emotional, personal, or educational development.
 - Guides students as they learn to plan, manage, and monitor their own social, educational, and emotional development.
- Reach out to our counselors:

Alicia Garcia

alicia.garcia@nisd.net

Erica Coronado

erica.coronado@nisd.net

Discovery Team

- Discovery classes include:
 - Music
 - Art
 - PE (physical education)
 - STEM (science, technology, engineering and math)
- Chumbley students attend PE class every other day. They also attend music, art, and STEM on a six day rotation. (Sample schedule below)

Day 1	Day 2	Day 3	Day 4	Day 5	Day 6
PE	Art	PE	Music	PE	STEM

- Discovery classes are critical for brain development, and offer a wide variety of social and academic benefits to our students.
- Students will receive grades in music, art, and PE.
- Reach out to our Discover Team at:

Music bevin.bickham@nisd.net	Art selena.gutierrez@nisd.net
PE jesus.padilla@nisd.net	STEM robin.bartel@nisd.net

Grades, Report Cards & Progress Reports

- Students will earn grades that reflect their learning.
- When students are absent, they are expected to complete missing assignments in a timely manner.
- Progress Reports will be available in HAC (Home Access Center) at the midpoint of each grading period.
- Report cards will be available in HAC one week after each grading period.
- Parents should routinely monitor student grades in HAC.
- For additional parent information visit

<https://www.nisd.net/parents>

Click the icons to access HAC, Schoology and the NISD Calendar.

 Home Access Center

 schoology®

2025-2026 NORTHSIDE ISD Academic Calendar											
August			September			October			November		
S M T W T F S			S M T W T F S			S M T W T F S			S M T W T F S		
1 2 3 4 5 6 7 8 9 10 11 12 13 14 15 16 17 18 19 20 21 22 23 24 25 26 27 28 29 30 31			1 2 3 4 5 6 7 8 9 10 11 12 13 14 15 16 17 18 19 20 21 22 23 24 25 26 27 28 29 30			1 2 3 4 5 6 7 8 9 10 11 12 13 14 15 16 17 18 19 20 21 22 23 24 25 26 27 28 29 30 31			1 2 3 4 5 6 7 8 9 10 11 12 13 14 15 16 17 18 19 20 21 22 23 24 25 26 27 28 29 30		
August 1st - Teacher Work Day			September 1st - Teacher Work Day			October 1st - Teacher Work Day			November 1st - Teacher Work Day		
December			January			February			March		
S M T W T F S			S M T W T F S			S M T W T F S			S M T W T F S		
1 2 3 4 5 6 7 8 9 10 11 12 13 14 15 16 17 18 19 20 21 22 23 24 25 26 27 28 29 30 31			1 2 3 4 5 6 7 8 9 10 11 12 13 14 15 16 17 18 19 20 21 22 23 24 25 26 27 28 29 30 31			1 2 3 4 5 6 7 8 9 10 11 12 13 14 15 16 17 18 19 20 21 22 23 24 25 26 27 28 29 30 31			1 2 3 4 5 6 7 8 9 10 11 12 13 14 15 16 17 18 19 20 21 22 23 24 25 26 27 28 29 30 31		
April			May			June			July		
S M T W T F S			S M T W T F S			S M T W T F S			S M T W T F S		
1 2 3 4 5 6 7 8 9 10 11 12 13 14 15 16 17 18 19 20 21 22 23 24 25 26 27 28 29 30 31			1 2 3 4 5 6 7 8 9 10 11 12 13 14 15 16 17 18 19 20 21 22 23 24 25 26 27 28 29 30 31			1 2 3 4 5 6 7 8 9 10 11 12 13 14 15 16 17 18 19 20 21 22 23 24 25 26 27 28 29 30 31			1 2 3 4 5 6 7 8 9 10 11 12 13 14 15 16 17 18 19 20 21 22 23 24 25 26 27 28 29 30 31		
August 1st - Teacher Work Day			September 1st - Teacher Work Day			October 1st - Teacher Work Day			November 1st - Teacher Work Day		
December			January			February			March		
S M T W T F S			S M T W T F S			S M T W T F S			S M T W T F S		
1 2 3 4 5 6 7 8 9 10 11 12 13 14 15 16 17 18 19 20 21 22 23 24 25 26 27 28 29 30 31			1 2 3 4 5 6 7 8 9 10 11 12 13 14 15 16 17 18 19 20 21 22 23 24 25 26 27 28 29 30 31			1 2 3 4 5 6 7 8 9 10 11 12 13 14 15 16 17 18 19 20 21 22 23 24 25 26 27 28 29 30 31			1 2 3 4 5 6 7 8 9 10 11 12 13 14 15 16 17 18 19 20 21 22 23 24 25 26 27 28 29 30 31		
August 1st - Teacher Work Day			September 1st - Teacher Work Day			October 1st - Teacher Work Day			November 1st - Teacher Work Day		

Homework

- Homework may be assigned at the teacher's discretion.
- Homework is not graded and should not exceed 15 minutes per day per subject.
- Special projects relating to the curriculum may require work to be completed at home. *Adequate time will be given to complete these assignments.*

Parent-Teacher Conferences

- All classroom teachers will schedule fall conferences to discuss each student's progress.
- Additional conferences may be scheduled upon request throughout the school year. Please call or email your child's homeroom teacher to request a conference.

Reports Cards: Reading & Language Arts change on NISD Report Card

- The NISD Elementary Report Card will no longer contain guided reading levels.
- Instead, parents will be provided with MAP Growth Reading assessment data three times during the school year via an individualized student MAP Family Report.
- The report will provide families with information on how their child is achieving and growing in the area of reading.
- The MAP Family Report will also provide information on how the data can be used to help your child and contain suggested questions parents may use to guide conversations with the classroom teacher.

- We understand that guided reading levels have been part of the NISD report card for many years. We are hopeful that the MAP Family Report will provide parents with deeper, more meaningful information that shows how their child is progressing in reading.
- For more information about the MAP Growth Assessment, please visit:
[https://www.nwea.org/family-toolkit/What is MAP Growth](https://www.nwea.org/family-toolkit/What-is-MAP-Growth) video for families



Chumbley PTA

- The **Parent-Teacher Association** is a cornerstone of our school. Through its generous involvement with students, scheduling of functions and continuous support of faculty and staff, the PTA is an invaluable partner.
- **Please join the Chumbley PTA.** We hope for 100% membership from parents and teachers. Membership dues help fund field trips, academic programs, reading and behavior incentives, school benches and picnic tables, and so much more.
- The PTA sponsors several **fundraising events** and we hope that all families will participate. All funds raised by the PTA go directly back to the school to benefit our students.
- Our **Apex** fundraiser is October 14-23, 2025. the Apex Fun Run will take place at Chumbley on Thursday, October 23, 2025 (time TBD).
- Please consider **volunteering** this year. Remember that you need to complete a background check at [NISD Volunteer Background Check Website](#)

Easy Ways to Support Chumbley

Box Tops

- Download the Box Tops app on phone or device
- Set preference to Chumbley Elementary
- Look for Box Tops logo on participating products
- Scan your receipt with 14 days of purchase
- Earn cash for Chumbley Elementary



Spirit Nights

- PTA will host spirit nights at local dining places throughout the year
- Eat in or carry out and restaurants will donate a portion of the night's profits to Chumbley Elementary
- Spirit Night dates will be announced throughout the school year

Thank you!

Please see the [NISD Elementary Handbook](#) website for additional information.

