

The image features a collection of colorful pencils and two spiral-bound notebooks. The pencils, in various colors including blue, green, yellow, pink, and red, are arranged in clusters around the perimeter of the page. Two spiral-bound notebooks, one pink and one yellow, are positioned in the top right and bottom left corners. The text is centered on a white background.

LUNA CONNECTS

BACK TO SCHOOL

July 21, 2025

A cluster of sharpened colored pencils in various colors (blue, green, yellow, orange, red, pink, purple) arranged in a fan-like pattern in the top-left corner.

WHO WE ARE

Luna Mission Statement: Transform the learning experience for students.

Luna Vision Statement: To improve the quality of life through education.

Profile of Northside ISD Learners: Learners will be creators, leaders, collaborators, communicators, innovators, critical-thinkers, and solution-finders

A cluster of sharpened colored pencils in various colors (blue, green, yellow, orange, red, pink, purple) arranged in a fan-like pattern in the bottom-right corner.

Luna Middle School

MARKET DAYS

6th Grade Prep Day
tours, schedules and
get to know you,
Thursday, 9 AM!

Wednesday, July 30th, 12 - 4
PM Thursday, July 31st, 8 AM -
12PM

Come and go as you please.

Meet your counselor, purchase your
gym uniform, transportation & lunch
info, join PTA , purchase Luna merch
and much more!

We hope to see you there!

6th Grade Prep Day is a come and go event, parents are welcome to join.





LUNA MIDDLE SCHOOL

WELCOME

NEW
STUDENTS

READY, SET, LEARN!

NEW TO LUNA PREP DAY

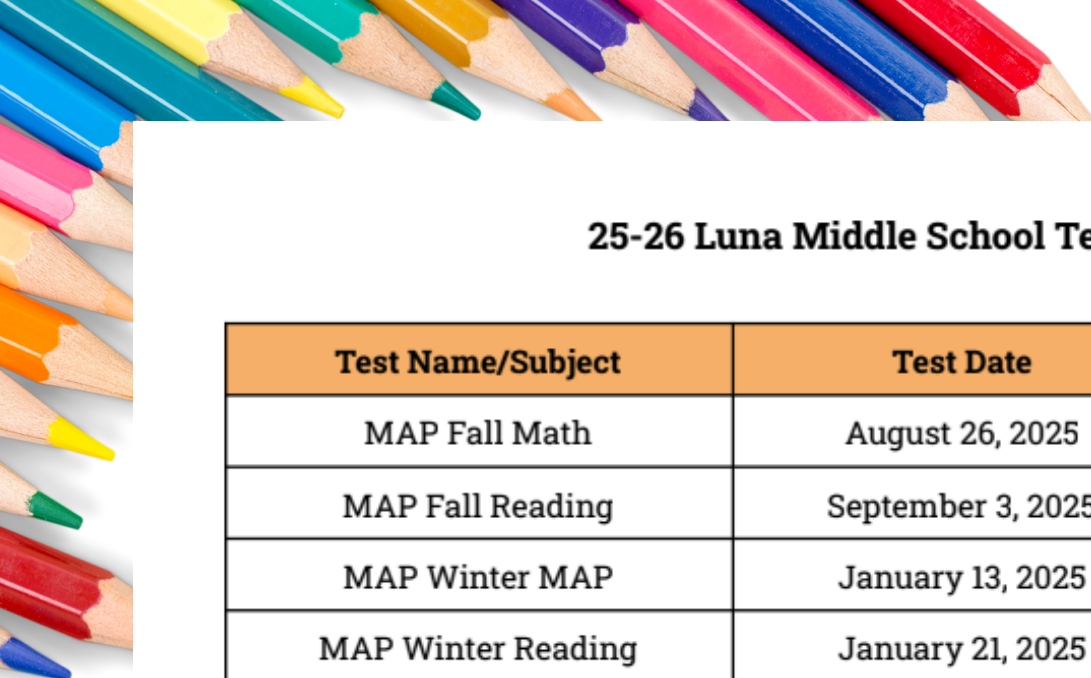
JULY 31ST 9:00-11:00
CAFETERIA

THIS IS AN OPEN HOUSE COME
AND GO EVENT.
SCHEDULES, TOURS, AND GETTING
TO KNOW YOU




LUNA MIDDLE SCHOOL 2025-2026 BELL SCHEDULE

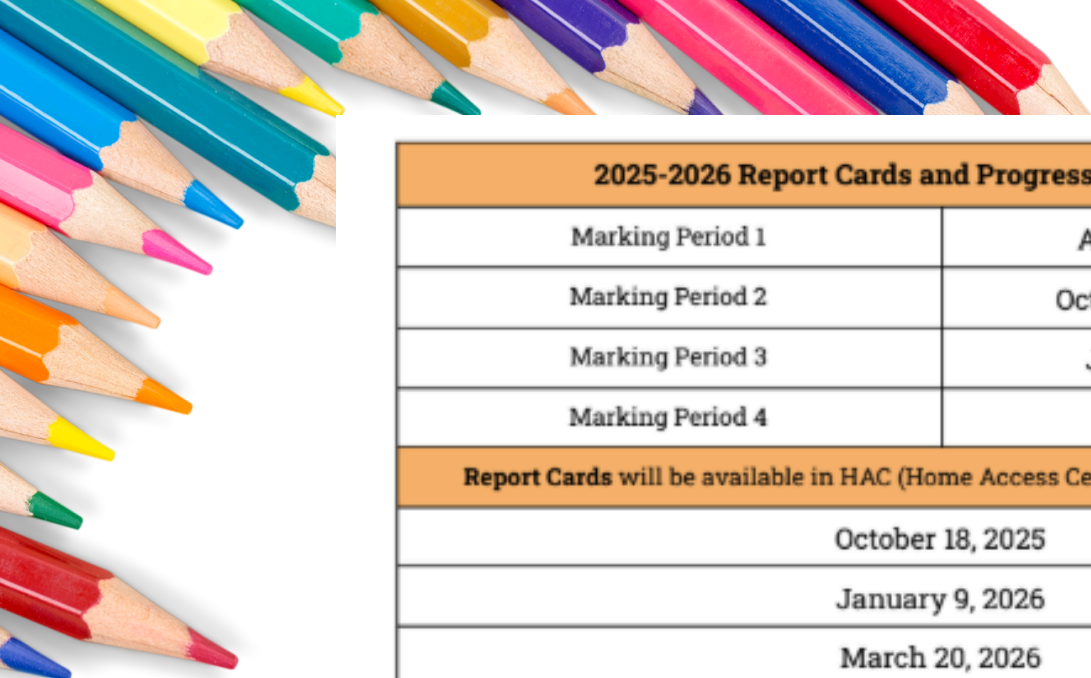
6th Grade	7th Grade	8th Grade
<i>1st Period</i> 8:40-9:28 (48 mins)	<i>1st Period</i> 8:40-9:28 (48 mins)	<i>1st Period</i> 8:40-9:28 (48 mins)
<i>2nd Period</i> 9:32-10:18 (46 mins)	<i>2nd Period</i> 9:32 -10:18 (46 mins)	<i>2nd Period</i> 9:32-10:18 (46 mins)
<i>3rd Period</i> 10:22-11:08 (46 mins)	<i>3rd Period</i> 10:22-11:08 (46 mins)	<i>3rd Period</i> 10:22-11:08 (46 mins)
<u>A-Lunch Students ONLY</u> Lunch: 11:12 -11:44 (32 mins)	<i>4th Period</i> 11:12 -11:57 (45mins)	<i>4th Period</i> 11:12 -11:57 (45mins)
<i>4rd Period</i> 11:48-12:33 (45 mins)	<u>B-Lunch Students ONLY</u> Lunch: 12:01-12:33 (32 mins)	<i>5th Period</i> 12:01 - 12:46 (45 mins)
<i>5th Period</i> 12:37-1:22 (45 mins)	<i>5th Period</i> 12:37-1:22 (45 mins)	<u>C- Lunch Students ONLY</u> Lunch: 12:50-1:22 (32 mins)
<i>6th Period</i> 1:26-2:11 (45 mins)	<i>6th Period</i> 1:26-2:11 (45 mins)	<i>6th Period</i> 1:26-2:11 (45 mins)
<i>7th Period</i> 2:15-3:01 (46 mins)	<i>7th Period</i> 2:15-3:01 (46 mins)	<i>7th Period</i> 2:15-3:01 (46 mins)
<i>8th Period</i> <i>Announcements</i> 3:05-3:55 (50 mins)	<i>8th Period</i> <i>Announcements</i> 3:05-3:55 (50 mins)	<i>8th Period</i> <i>Announcements</i> 3:05-3:55 (50 mins)



25-26 Luna Middle School Testing Dates

Test Name/Subject	Test Date	Grade Testing
MAP Fall Math	August 26, 2025	6th, 7th, 8th
MAP Fall Reading	September 3, 2025	6th, 7th, 8th
MAP Winter MAP	January 13, 2025	6th, 7th, 8th
MAP Winter Reading	January 21, 2025	6th, 7th, 8th
STAAR Reading/Language Arts	April 14, 2026	6th, 7th, 8th
STAAR Science	April 20, 2026	8th Grade ONLY
STAAR Social Studies	April 21, 2026	8th Grade ONLY
STAAR Math/EOC Algebra I	April 28, 2026	6th, 7th, 8th
MAP Spring Math	May 5, 2026	6th, 7th, 8th
MAP Spring Reading	May 12, 2025	6th, 7th, 8th





2025-2026 Report Cards and Progress Reports Dates

Marking Period 1	August 11-October 10
Marking Period 2	October 13-December 19
Marking Period 3	January 6-March 6
Marking Period 4	March 16-May 21

Report Cards will be available in HAC (Home Access Center) on the Following Dates:

October 18, 2025

January 9, 2026

March 20, 2026

May 29, 2026

Progress Reports will be available in HAC (Home Access Center) on the Following Dates:

August 29, 2025

September 19, 2025

October 31, 2025

November 21, 2025

January 26, 2026

February 13, 2026

April 7, 2026

April 27, 2026





MEET THE TEACHER

6TH GRADE

AUGUST 13, 2025

6–7:30 PM

7/8 GRADES

AUGUST 14, 2025

6–7:30 PM

COME AND GO EVENT

TEACHERS WILL MEET FAMILIES IN THEIR CLASSROOMS.





SUPPLY LISTS ARE ON WEBSITE

Please do not send students on first week with all of their supplies. Teachers will communicate what is needed as needed. Students need paper, pens, and pencils during week one.



PRIMARY CARE that comes to U



We're coming to U!

Northside ISD

Back to School Immunization Drives 2025

7/17- NISD Farris Athletic Complex (9am-3pm)

7/28- NISD Cable Elementary (8am-2:30pm)

7/31- NISD McDermott Elementary (12pm-6pm)

8/5- Martin Elementary (2pm-5pm)

8/7- Passmore Elementary (9am-3:30pm)

Appointment required

Must bring copy of vaccine record to appointment

Save Time – Receive on-the-spot care in a convenient, comfortable location.

Variety of Services – From wellness exams to sick visits, counseling and education, we cover it all.

We accept private insurance, CHIP, Medicaid and CareLink.



Scan to book appointment. Call 210-358-7020 or visit healthyUexpress.com for more information.

CUIDADO MÉDICO que viene a usted



¡Vamos a usted!

Northside ISD

Campaña de Vacunación de Regreso a la Escuela

17/7- NISD Farris Athletic Complex (9am-3pm)

28/7- NISD Cable Elementary (8am-2:30pm)

31/7- NISD McDermott Elementary (12pm-6pm)

5/8- Martin Elementary (2pm-5pm)

7/8- Passmore Elementary (9am-3:30pm)

Regístrate en línea/llamar para hacer una cita

*Traer una copia del registro de
vacunas*

Ahorre Tiempo – Reciba cuidado médico
en el lugar conveniente y cómodo.

Variedad de Servicios – Desde exámenes
de bienestar hasta visitas por enfermedad,
consejería y educación, lo cubrimos todo.

Aceptamos seguro de salud privado, CHIP,
Medicaid y CareLink.



Escanee para reservar una cita. Llame al 210-358-7020 o visite
healthyUexpress.com para obtener más información.



SCHOOL PICTURES

Fall- 9/19/25

8th Grade Panoramic-10/25

Retakes- 10/31/25

Spring Purchases- 2/27/26



JOIN LUNA PTA

Please stop by our table at during MarketDays and Meet the Teacher. Don't miss your chance to secure a PTA membership for you and your student, as it will allow them to participate in the exciting treat giveaways that we offer throughout the year.



<https://www.joinpta.org>



We are looking to fill all PTA positions for the 25-26 School Year.

- **President**
- **Vice President**
- **Secretary**

If interested, please email Leti.Chapa@nisd.net

A cluster of sharpened colored pencils in various colors (blue, green, yellow, orange, red, pink, purple) is positioned in the top-left corner of the page, partially overlapping the title.

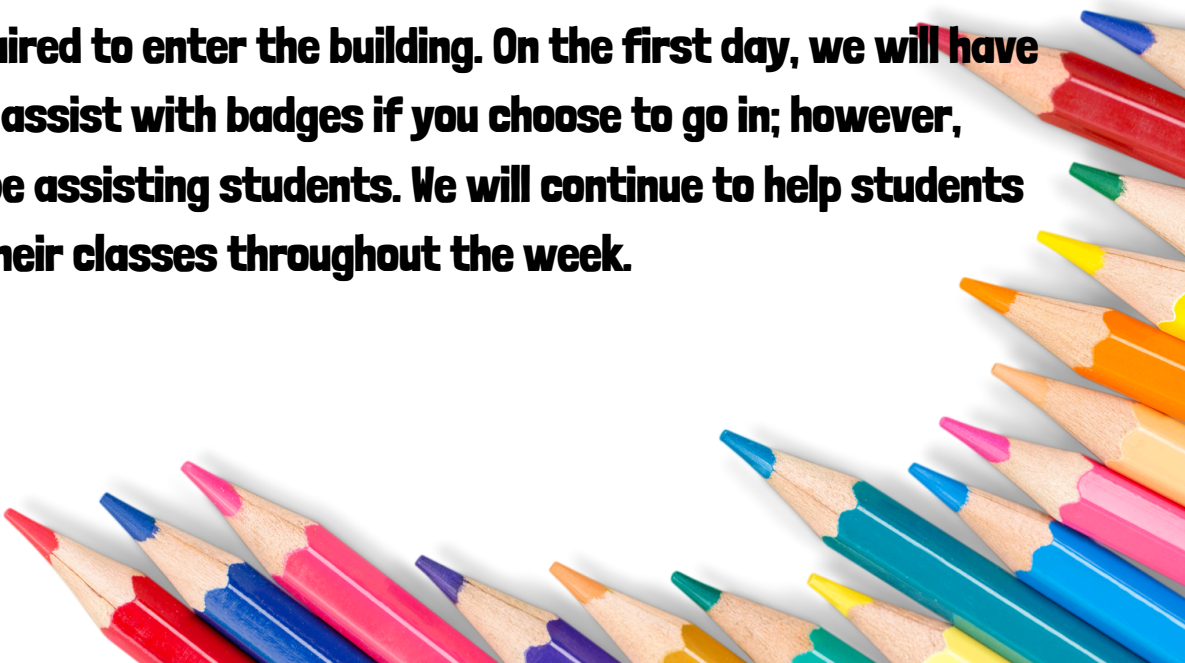
WHAT YOU CAN EXPECT

First day of school

August 11, 2025

As students arrive on campus, Luna staff will be outside in the front and in the bus loop welcoming students into the building. Inside the building, staff will help students find their first period classrooms. These classes will be posted in the Commons. Students will receive their paper copy of their schedules during first period.

Visitors' badges will be required to enter the building. On the first day, we will have staff set up outside to assist with badges if you choose to go in; however, remember that staff will be assisting students. We will continue to help students find their classes throughout the week.

A cluster of sharpened colored pencils in various colors (blue, green, yellow, orange, red, pink, purple) is positioned in the bottom-right corner of the page, partially overlapping the text.



DAILY ARRIVAL

WHAT TIME SHOULD I ARRIVE AT SCHOOL?

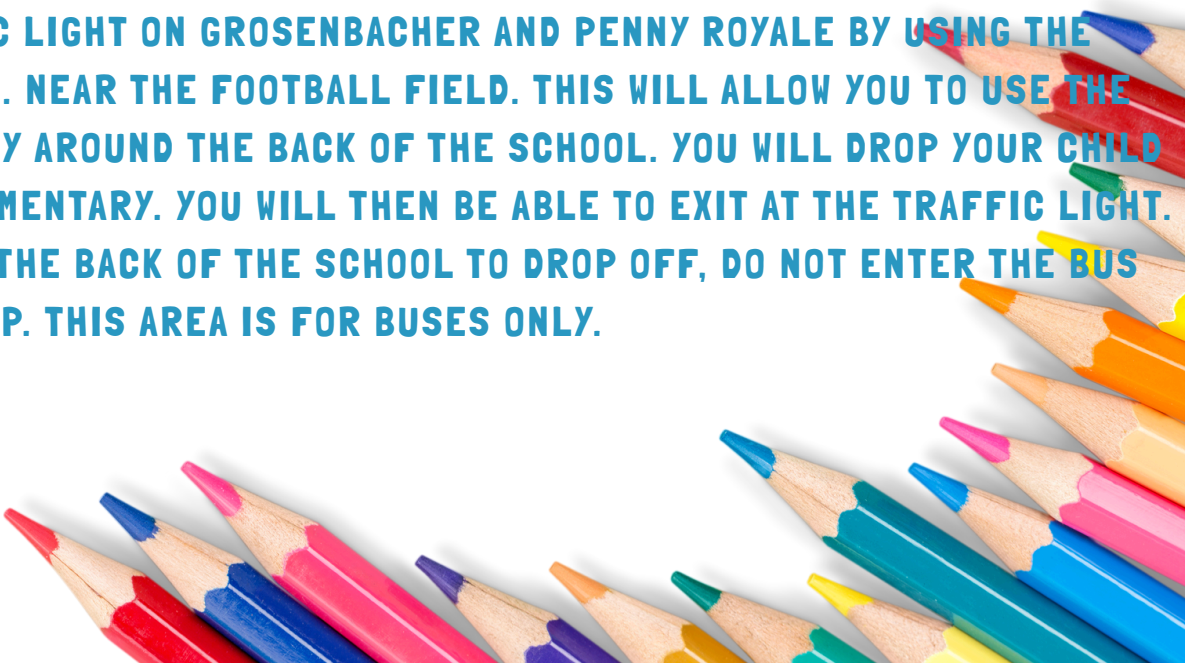
FIRST PERIOD STARTS AT 8:40 AM. THAT MEANS STUDENTS MUST BE IN THEIR FIRST PERIOD CLASSROOM BEFORE THE 8:40 BELL RINGS.

HERE ARE A FEW TIPS TO ENSURE YOUR CHILD MAKES IT TO FIRST PERIOD ON TIME:

PLAN ON ARRIVING AT SCHOOL BY 8:20 AM. THE TRAFFIC ON GROSENBACHER RD. MAKES IT DIFFICULT TO DROP OFF AT 8:30 AND STILL HAVE TIME TO GET TO CLASS BY 8:40 AM.

WE RECOMMEND DROPPING OFF BEFORE 8:00 AM, SO THAT YOUR CHILD HAS AN OPPORTUNITY TO GO TO TUTORING, IF NEEDED.

AVOID THE CONGESTED TRAFFIC LIGHT ON GROSENBACHER AND PENNY ROYALE BY USING THE ENTRANCE ON GROSENBACHER RD. NEAR THE FOOTBALL FIELD. THIS WILL ALLOW YOU TO USE THE ACCESS ROAD TO DRIVE ALL THE WAY AROUND THE BACK OF THE SCHOOL. YOU WILL DROP YOUR CHILD OFF BETWEEN LUNA MS AND OTT ELEMENTARY. YOU WILL THEN BE ABLE TO EXIT AT THE TRAFFIC LIGHT. IF YOU USE THE ACCESS ROAD AT THE BACK OF THE SCHOOL TO DROP OFF, DO NOT ENTER THE BUS LOOP. THIS AREA IS FOR BUSES ONLY.



A cluster of sharpened colored pencils in various colors (blue, green, yellow, orange, red, pink, purple) arranged in a fan-like pattern in the top-left corner.

MORNINGS

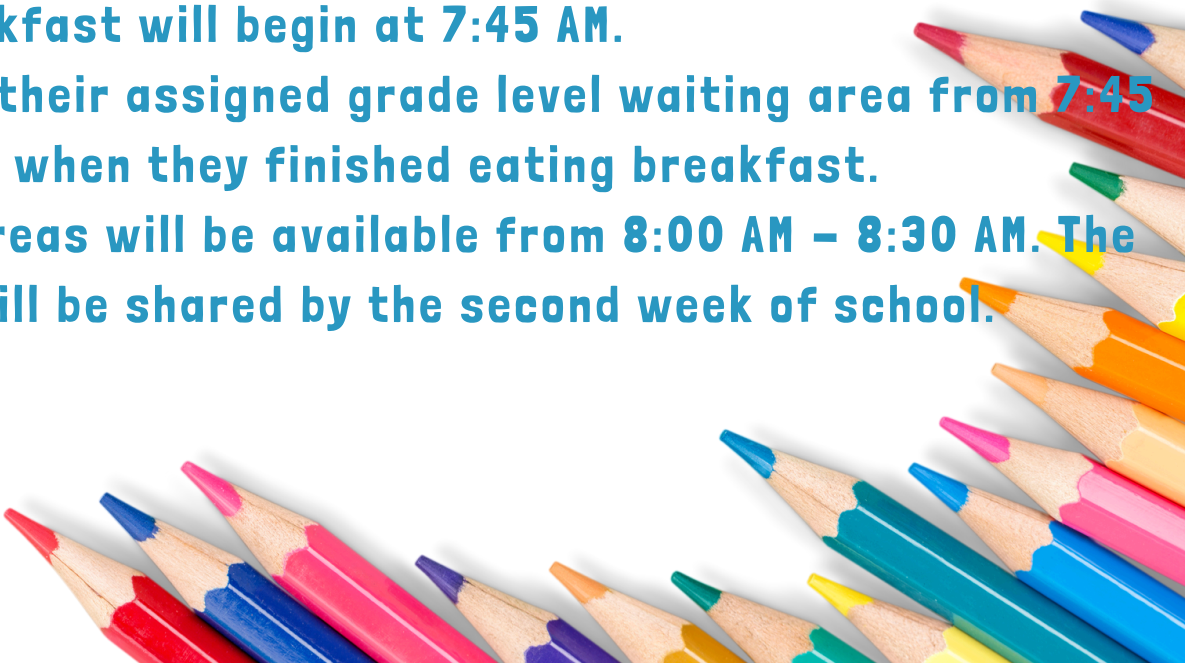
The following information will help your child use their time wisely prior to the start of the school day.

Student access to the building will begin at 7:45 AM. A staff member will open the door at the front entrance to allow students who are waiting at the front of the school to enter the building.

Breakfast will begin at 7:45 AM.

Students will be guided to their assigned grade level waiting area from 7:45 AM – 8:30 AM or when they finished eating breakfast.

Tutoring for all content areas will be available from 8:00 AM – 8:30 AM. The tutoring schedule will be shared by the second week of school.

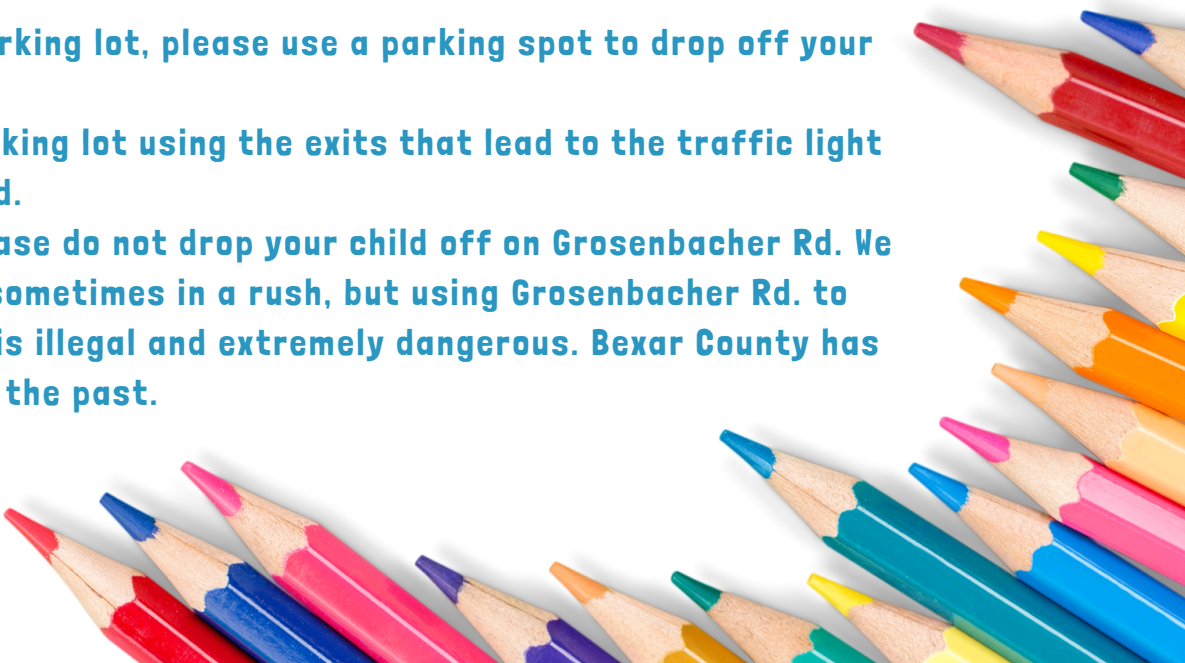
A cluster of sharpened colored pencils in various colors (red, orange, yellow, green, blue, pink, purple) arranged in a fan-like pattern in the bottom-right corner.



MORNING DROP OFF

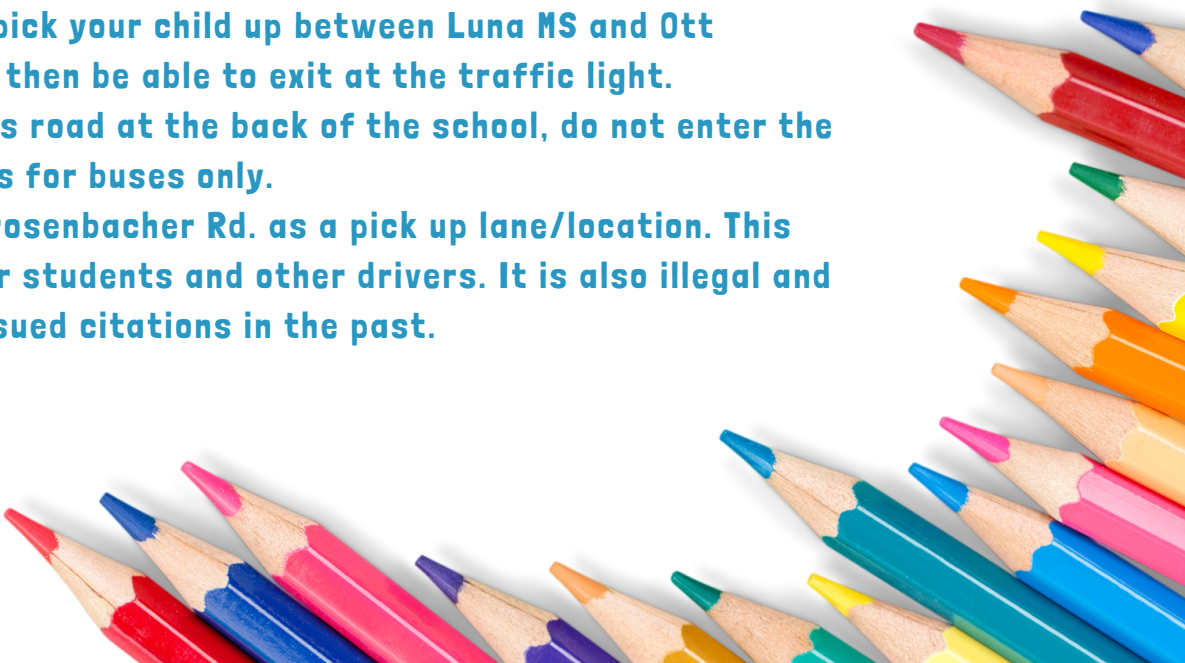
**THE FOLLOWING MORNING TRAFFIC AND PARKING LOT SAFETY ETIQUETTE
WILL HELP EVERYONE'S MORNING COMMUTE.**

- The front parking lot is not for dropping off. You must park in a designated spot to allow your child to safely exit your vehicle.
 - Both lanes in the front of the school will be used for student drop off.
 - Students in the right lane must exit the vehicle to the right.

 - Students in the left lane must exit the vehicle to the left and use the crosswalk.
 - This means the left lane will not be used as a drive-thru lane in the morning.
 - If you enter the parking lot, please use a parking spot to drop off your child.
 - Please exit the parking lot using the exits that lead to the traffic light on Grosenbacher Rd.
 - Please, please, please do not drop your child off on Grosenbacher Rd. We know that we are sometimes in a rush, but using Grosenbacher Rd. to drop off students is illegal and extremely dangerous. Bexar County has issued citations in the past.
- 



AFTERNOON PICK UP

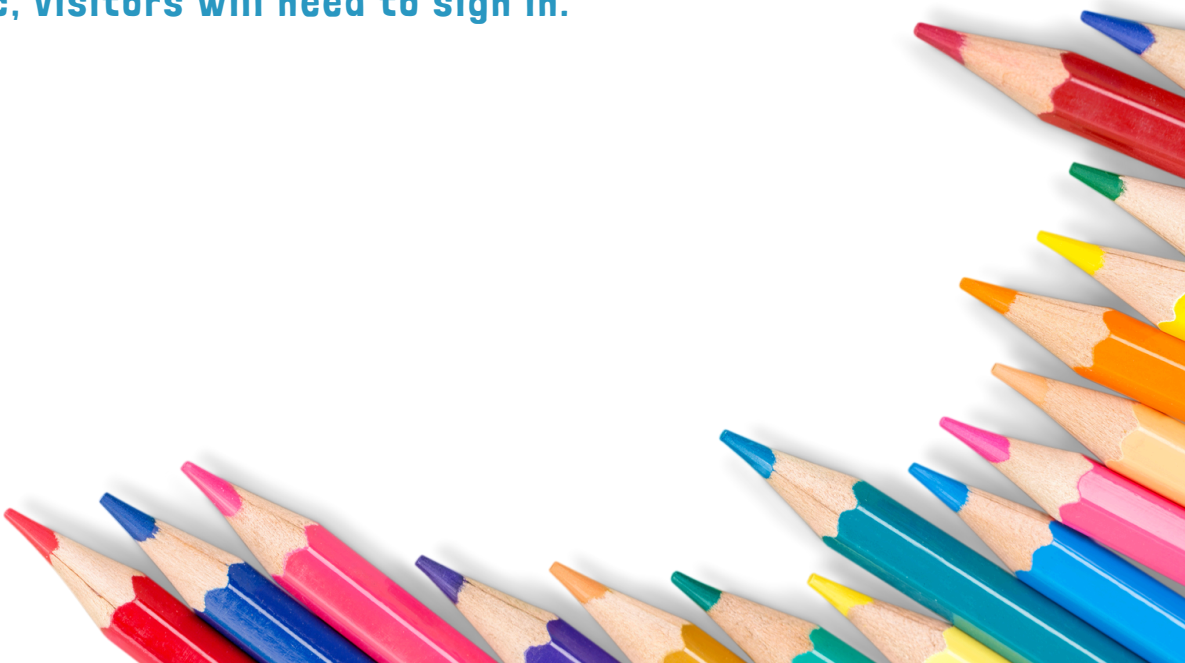
- Students are dismissed at 3:55 PM. If you use the parking lot to pick up your child, you must park in a designated parking spot.
 - Please do not block other cars that are parked and waiting to exit.
 - The right lane will be used as the pick up lane in the afternoon.
 - Please be patient as some students pick up instruments or other items before walking outside.
 - The left lane will be used as a drive-thru lane in the afternoon. Please be cautious when pulling into the left lane.
 - Avoid the congested traffic light on Grosenbacher and Penny Royale by using the entrance on Grosenbacher Rd. near the football field. This will allow you to use the access road to drive all the way around the back of the school. You will pick your child up between Luna MS and Ott Elementary. You will then be able to exit at the traffic light.
 - If you use the access road at the back of the school, do not enter the bus loop. This area is for buses only.
 - Please do not use Grosenbacher Rd. as a pick up lane/location. This creates a hazard for students and other drivers. It is also illegal and Bexar County has issued citations in the past.
- 



SECURE ENTRY

School hours: 8:40 AM – 3:55 PM

Office hours 7:45 AM–4:15 PM

- Students may enter the school building starting at 7:45 AM
 - All doors will be locked. Students, parents/guardians and all visitors may enter the building by ringing the doorbell at the front entrance.
 - Only staff members may open the door for students, parents/guardians, district employees or all other visitors.
 - When going to the clinic, visitors will need to sign in.
- 

A decorative border of various colored pencils (red, blue, green, yellow, orange, pink, purple) is arranged in a circular pattern around the text.

STUDENT BADGES

For safety reasons, Luna students will be required to wear student ID's on campus.

- **Sixth graders and new to Northside students will be given an ID.**
- **Details for replacement badges will be shared with students and parents the first week of school.**

LUNA ATHLETICS

Dear Athletic Parent,

It is time to start preparing for the 2025-2026 athletic season at Luna Middle School. There is a lot of paperwork that must be filled out before your athlete can participate in summer conditioning programs, athletic period programs, and tryouts for teams this fall. We have provided forms with very important instructions. Please complete these forms by the deadline dates provided. Every fall, we have several athletes who are not able to participate in our programs because their paperwork is not complete.

We will have a "Meet the Longhorns" night on July 30th at 5PM in the Cafeteria (Market Day) to give out information on paperwork and provide a brief introduction of our athletic program and staff.

This list below provides information about each form in this packet:

1. Physical & Medical History Form

-Current 7th graders with a physical on file with the coaching staff **will not** need to complete another physical.

-Current 6th graders **will** have to complete a physical before **the first day of school on Monday, August 11th.**

-The physicals will be good for two years.

-Current 6th and 7th graders **will** need to fill out the Medical History portion of the physical. Must be completed every year.

****Athletes who have not turned in a completed physical will not be able to participate in conditioning programs, athletic period programs, or try out for teams.**

2. Rankonesport (Must be completed every year)

NISD uses an online electronic form system called Rankonesport. The website allows you to sign on and complete several very important documents. The documents include Medical History, UIL Forms Signature Page, Athlete Insurance/Emergency Information, Behavior Expectations of Spectators, and NISD Code of Conduct. All athletes must have this information complete **before the first day of school on Monday, August 11th.**

****Athletes who have not completed the Rankonesport online electronic form system will not be able to participate in conditioning programs, athletic period programs, or try out for teams.**

3. SportsYou Sign Up Form (QR Codes as well as the Sportsyou codes are below)

-Please sign up for the SportsYou app immediately so that you can receive updates during the spring and summer.

-We will send out a SportsYou message during the summer with important dates for the fall.

4. Luna Athletic Uniform/Equipment Distribution Dates

Athletic uniforms will be issued to the athlete on the first day of school, **Monday, August 11th.** We will have extra uniforms available for purchase. **8th Grade** distribution will be on **Tuesday August 5th** and **7th Grade** will be on **Wednesday August 6th.** Distribution will occur from 5-6:30 PM in the main gym/boys locker room.

Sincerely,

Jacob Escamilla
Luna MS
Head Boys Coach
jacob.escamilla@nisd.net



RANKONE
ONLINE FORM



PHYSICAL
MEDICAL HISTORY

47ZMF6K4



7th Boys
25-26 sportsYou

W6AD3TQQ



8th Boys
25-26 sportsYou



- **MUST HAVE A PHYSICAL ON FILE**
- **MUST COMPLETE ONLINE PAPERWORK @ RANKONESPORT.COM**
- **DRESS IN T-SHIRT, SHORTS, TENNIS SHOES**

7TH GRADE
TUESDAY - THURSDAY
(AUG. 12 - AUG. 14)
6:00AM - 8:00AM

8TH GRADE
TUESDAY - THURSDAY
(AUG. 12 - AUG. 14)
4:00PM - 6:00PM

LUNA ATHLETICS

7th Grade Girls SportsYou
Code to Join: PJXCZKKX



Lisa King
Head Girls Coach
Luna Middle School
Lisa.king@nisd.net

8th Grade Girls SportsYou
Code to Join: KFUH2S9D



THE HARD COPY OF THE PHYSICALS and THE MEDICAL HISTORY FORMS MUST BE RETURNED TO THE COACH

Incoming 7th grader Sports Paperwork Checklist

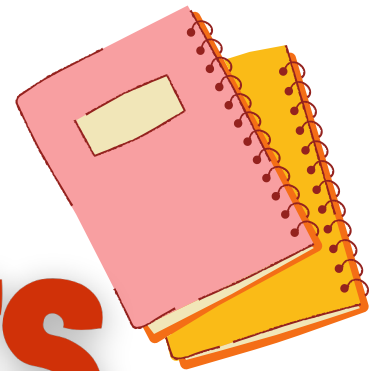
- ☐ Pre-Participation Physical Evaluation-Physical Examination Form ***Return Hard copy to the coach***
- ☐ Medical History form ***Return Hard copy to the coach***
- ☐ If your child has asthma, an Asthma Action Plan form must be filled out by your personal doctor annually. The school nurse has forms or you can go online to NISD/Departments/Athletics/Forms/Asthma Action Plan to download the forms.
- ☐ RankOne Sports Online Paperwork Requirements (www.rankone.com) - Once completed forms are uploaded to Rankone. ***DO NOT PRINT OUT ACKNOWLEDGEMENTS***
- ☐ Order Athletic Uniform

Incoming 8th grader *Did NOT tryout during 7th grade* Sports Paperwork Checklist

- ☐ Pre-Participation Physical Evaluation-Physical Examination Form ***Return Hard copy to the coach***
- ☐ Medical History form ***Return Hard copy to the coach***
- ☐ If your child has asthma, an Asthma Action Plan form must be filled out by your personal doctor annually. The school nurse has forms or you can go online to NISD/Departments/Athletics/Forms/Asthma Action Plan to download the forms.
- ☐ RankOne Sports Online Paperwork Requirements (www.rankone.com) - Once completed forms are uploaded to Rankone. ***DO NOT PRINT OUT ACKNOWLEDGEMENTS***
- ☐ Order Athletic Uniform

Incoming 8th grader *DID tryout for a sport during 7th grade* Sports Paperwork Checklist

- ☐ Medical History form ***Return Hard copy to the coach***
- ☐ If your child has asthma, an Asthma Action Plan form must be filled out by your personal doctor annually. The school nurse has forms or you can go online to NISD/Departments/Athletics/Forms/Asthma Action Plan to download the forms.
- ☐ RankOne Sports Online Paperwork Requirements (www.rankone.com) - Once completed forms are uploaded to Rankone. ***DO NOT PRINT OUT ACKNOWLEDGEMENTS***
- ☐ Order Athletic Uniform



LUNA CONNECTS

LONGHORN PRIDE

NEVER DIES!

July 21, 2025

