



**10 MINUTES LATE
DAILY = 50 MINUTES
A WEEK = 1.5 WEEKS
OF SCHOOL MISSED
PER YEAR.**

**LATE 1 HOUR A DAY
= 1 DAY A WEEK =
8 WEEKS OF
SCHOOL MISSED PER
YEAR.**

**IF YOU WANT YOUR
CHILD TO BE
SUCCESSFUL AT
SCHOOL, ATTENDANCE
AND PUNCTUALITY
MATTER!**

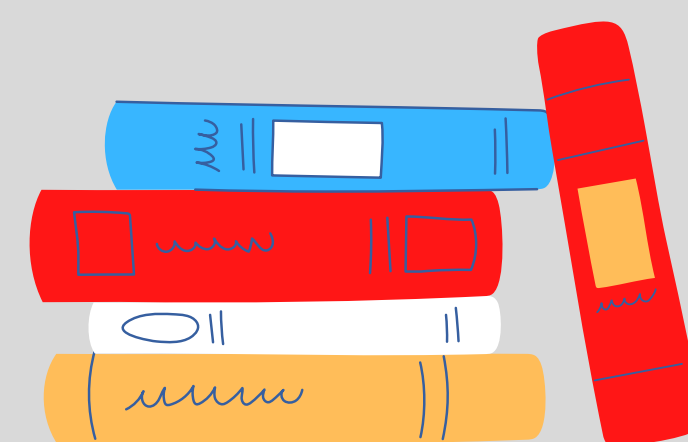
**ARE YOU A
CARNAHAN
SUPER HERO?**



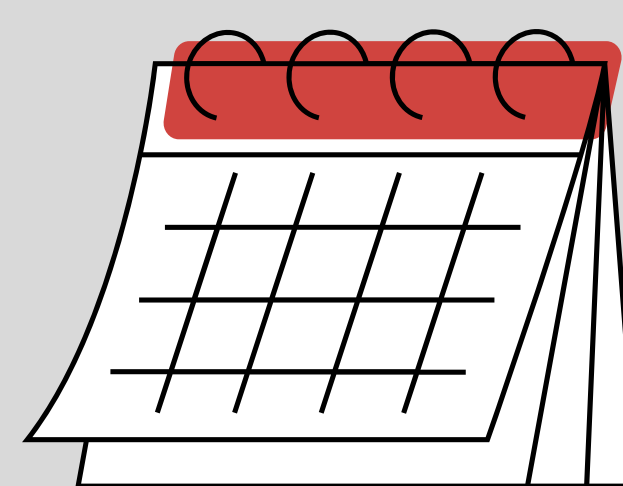
**ARE YOU HERE
BEFORE 7:45 A.M.?**



**AT SCHOOL
EVERYDAY?**



READY TO LEARN?



ON TIME DAILY?

**JOSLYN ALLEN
STUDENT ATTENDANCE LIAISON
210.397.5868**